

# 26 PTO pumps & accessories

PTO Prices	Sec26:2
High Pressure Piston Pump	Sec26:4
Bi-Directional Gear Pump	Sec26:6
PTO 19 Valve	Sec26:7
Power Take Off ZF Aluminum	Sec26:8
Power Take Off ZF Casting	Sec26:9
Power Take Off Actros A Casting	Sec26:10
Power Take Off Actros B Casting	Sec26:11
Power Take Off Volvo R Casting	Sec26:12
Power Take Off Mercedes 352 Casting	Sec26:13
Power Take Off Volvo F12 Casting	Sec26:14
Power Take Off Man Casting	Sec26:15
Power Take Off GRS900 Casting	Sec26:16
Power Take Off Pump Extension Long Casting	Sec26:17
Power Take Off Gear Pump Adaptor TYP 2	Sec26:18
Power Take Off Piston Pump Adaptor	Sec26:19
Power Take Off ZF Adaptor	Sec26:20
16S 130 Cardan Shaft 215mm	Sec26:21

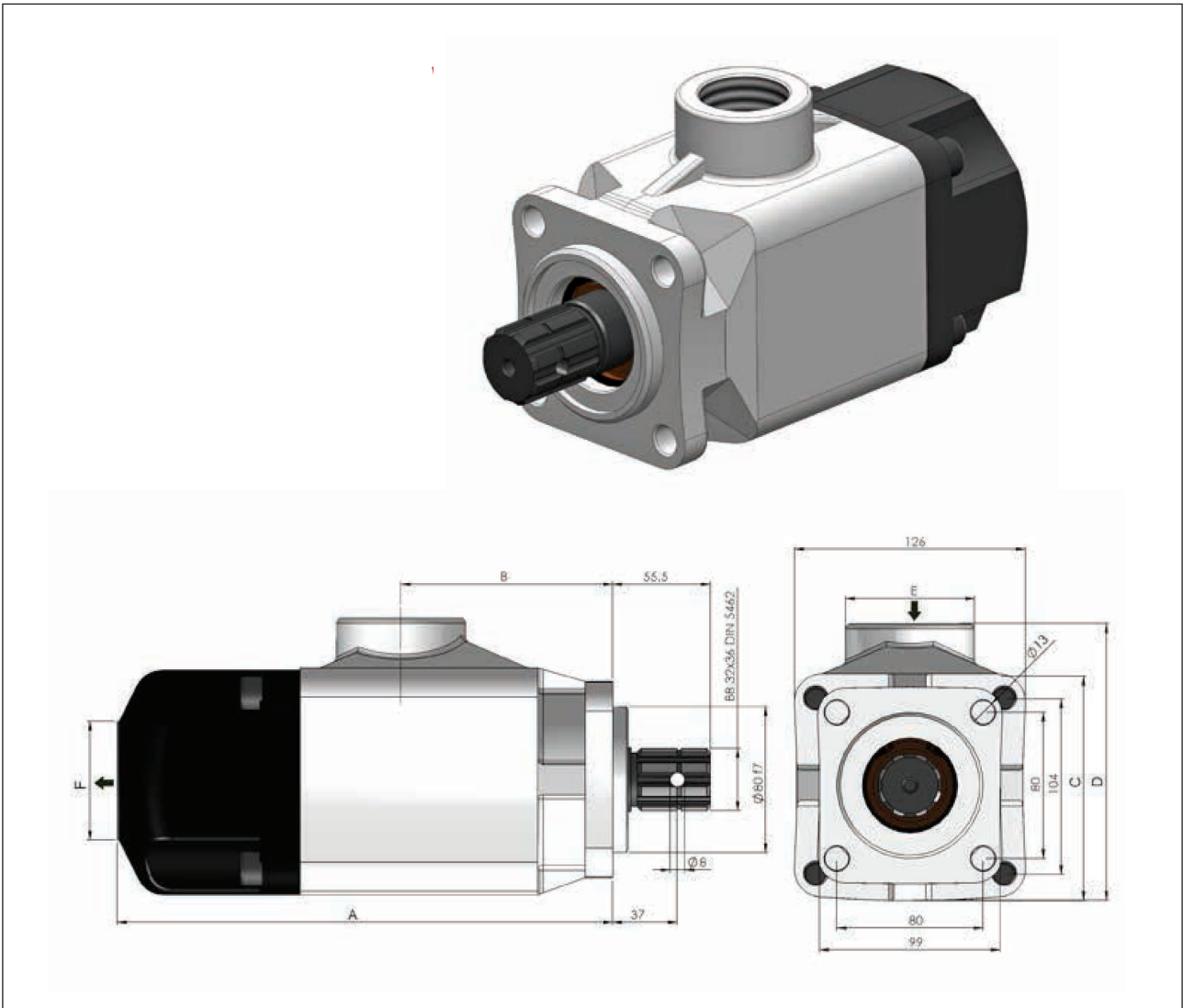
## PTO Prices

Part number				Retail price R
PTO-HP6PP50LT	950 050 00	HIGH PRESSURE PUMP 50 LT.		
PTO-HP6PP60LT	950 060 00	HIGH PRESSURE PUMPS 60 LT.		
PTO-HP9PP80LT	950 080 00	HIGH PRESSURE PUMPS 80 LT.		
PTO-GP65LBD	301 065 BR	30 SERIAL BI-DIRECTIONAL GEAR PUMP 65LT		
PTO-GP85LBD	301 085 BR	30 SERIAL BI-DIRECTIONAL GEAR PUMP 85LT		
PTO-19VALVE	200 080 08	PTO 19 - DOP19 VALVE		
PTO-ZFALU	501 010 00	POWER TAKE OFF ZF ALUMINIUM		
PTO-ZFCASTING	500 010 00	POWER TAKE OFF ZF CASTING		
PTO-ATROSACASTING	500 020 00	POWER TAKE OFF ACTROS A CASTING		
PTO-ATROSBCASTING	500 025 00	POWER TAKE OFF ACTROS B CASTING		
PTO-VOLVORCASTING	500 036 00	POWER TAKE OFF VOLVO R CASTING		
PTO-352CASTING	500 030 00	POWER TAKE OFF MERCEDES 352 CASTING		

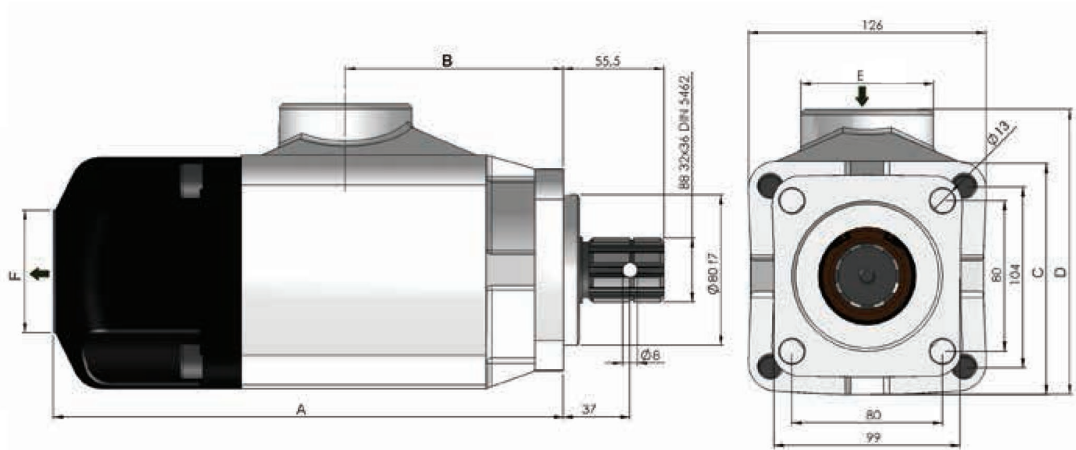
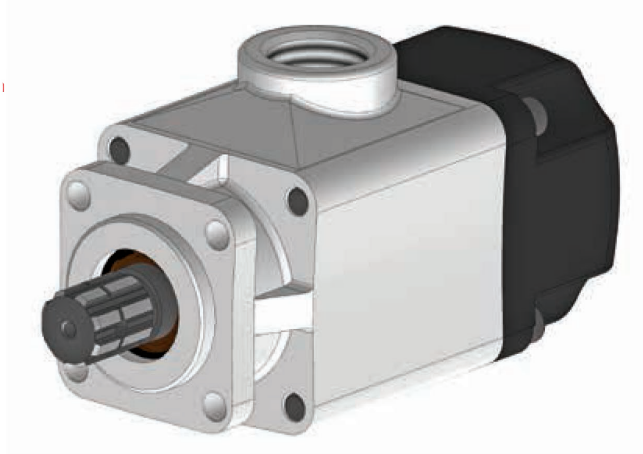
Part number				Retail price R
PTO-VOLVOF12CAST	500 038 00	POWER TAKE OFF VOLVO F12 CASTING		
PTO-MANCASTING	500 058 00	POWER TAKE OFF MAN CASTING		
PTO-GRS900ISOCAST	500 000 90	POWER TAKE OFF GRS 900 CASTING		
PTO-PUMPEXTCAST10	500 055 00	POWER TAKE OFF PUMP EXTENSION LONG CASTING		
PTO-GPATYPE101	500 062 00	POWER TAKE OFF GEAR PUMP ADAPTOR TYP 2		
PTO-PPADAPTOR	500 065 00	POWER TAKE OFF PISTON PUMP ADAPTOR		
PTO-ZFADAPTOR	500 070 00	POWER TAKE OFF ZF ADAPTOR		
PTO-16K160CS250MM	130 215 045	16 S 130 CARDAN SHAFT 215 MM.		
PTO-VOLVORCS252	140 252 045	VOLVO R CARDAN SHAFT 252 MM.		

**PTO-HP6PP50LT**

**High Pressure Piston Pump**



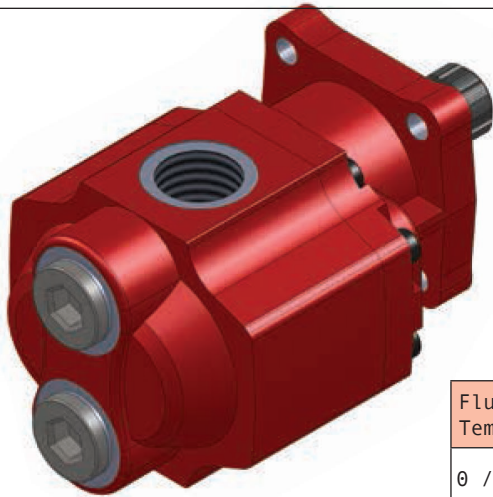
Code	Displacement cm <sup>3</sup> /1000	Rotation	Working Pressure	A mm	B mm	C mm	D mm	E Inlet	F Outlet	Weight
PTO-HP6PP50LT	50	BI-ROTATIONAL								
PTO-HP6PP60LT	60	BI-ROTATIONAL								



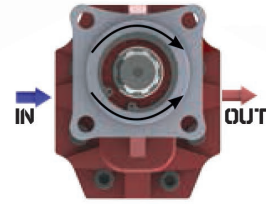
Code	Displacement cm <sup>3</sup> /1000	Rotation	Working Pressure	A mm	B mm	C mm	D mm	E Inlet	F Outlet	Weight
PTO-HP9PP80LT	80	BI-ROTATIONAL								

# PTO-GP65LBD

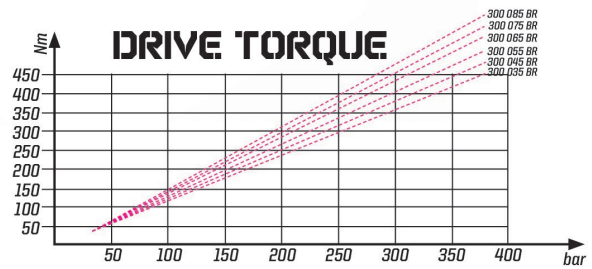
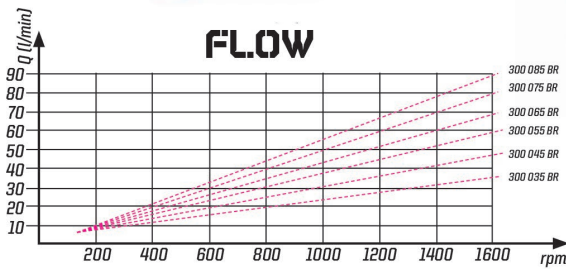
# Bi-Directional Gear Pump



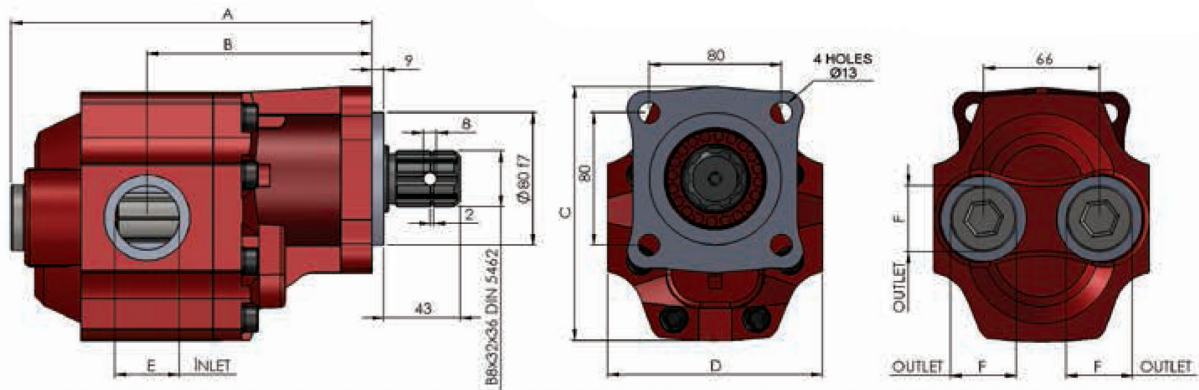
**BI-ROTATIONAL PUMP**



Fluid Temp. °C	Input Working Bar	Optimale K. Viscosity	Oil Filtering
0 / 100	0,3 / 1,7 bar	10 / 100 CST	>200 bar: 25 um <200 bar: 35 um



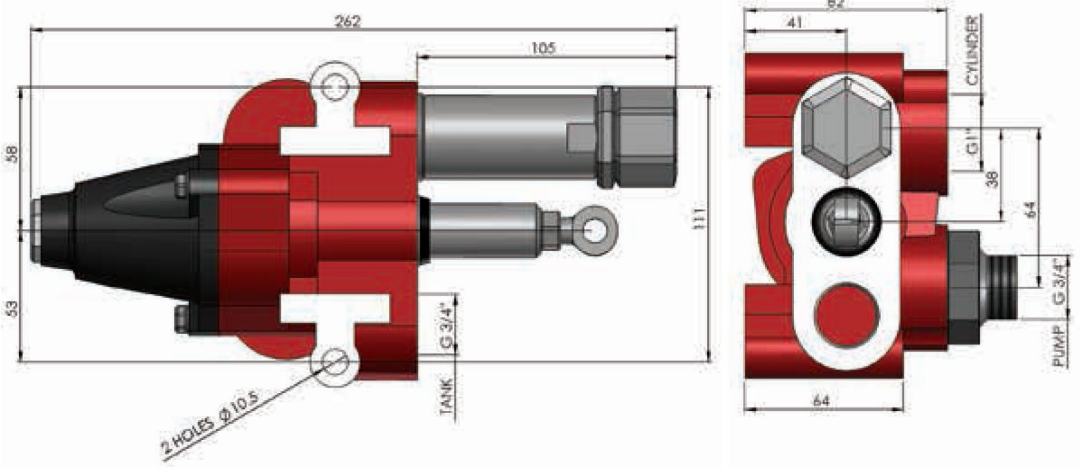
**NOTE:** THE ABOVE SPECIFICATIONS REFER TO OIL TYPE ISO VG 46 AT 50°



Code	Displacement cm <sup>3</sup> /1000	Rotation	Working Pressure	A mm	B mm	C mm	D mm	E Inlet	F Outlet	Weight
PTO-GP65LBD	65	BI-ROTATIONAL	245	222	141	149	128	1" 1/4 G	1" 1/4 G	15
PTO-GP85LBD	85	BI-ROTATIONAL	220							

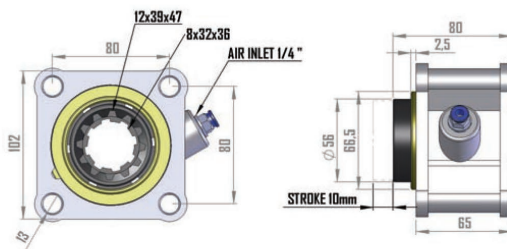


**NOTE:** CHECK WHETHER TIGHTNESS OR NOT AND THE OIL OF MAIN GEARBOX AFTER PTO ASSEMBLING.



Fluid Temp. °C	Input Working Bar	Optimale K. Viscosity	Oil Filtering
0 / 100	7/12 Bar	10 / 100 CST	>200 bar : 25 um <200 bar : 35 um

Code	Displacement cm <sup>3</sup> /1000	Working Pressure	Test Pressure	Max. Test Pressure	Oil Inlet Pump	Oil Outlet Tank	Oil Outlet Cylinder	Weight Kg.
PTO-19VALVE	110	170	170	126	3/4" G	3/4" G	1" G	4.5



**NOTE:** IF THE MAIN GEARBOX DIRECTION OF ROTATION IS RIGHT; GEAR PUMP MUST BE SELECTED IN THE LEFT DIRECTION.

**NOTE:** IF THE MAIN GEARBOX DIRECTION OF ROTATION IS LEFT; GEAR PUMP MUST BE SELECTED IN THE RIGHT DIRECTION.

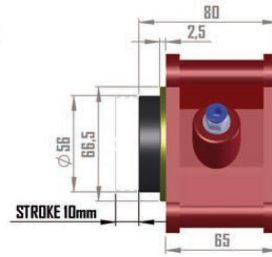
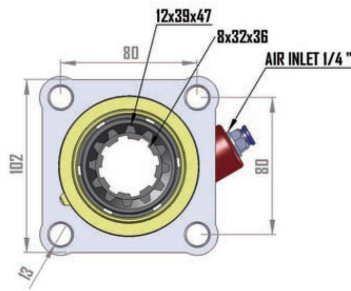
**NOTE:** CHECK WHETHER THERE IS TIGHTNESS AND THE OIL OF MAIN GEARBOX AFTER PTO ASSEMBLING.



Fluid Temp. °C	Input Working Bar
0 / 90	7 / 12 bar

Code	Power HP at 1000 Rpm	Rotation	Output	Torque Continuous Nm	Torque Max Nm	Ratio	Weight Kg
PTO-ZFALU	35	Right (Cw)	ISO	400	450	1:1	2,5
Main Gearbox: For G 100							
Test: 15 sec							

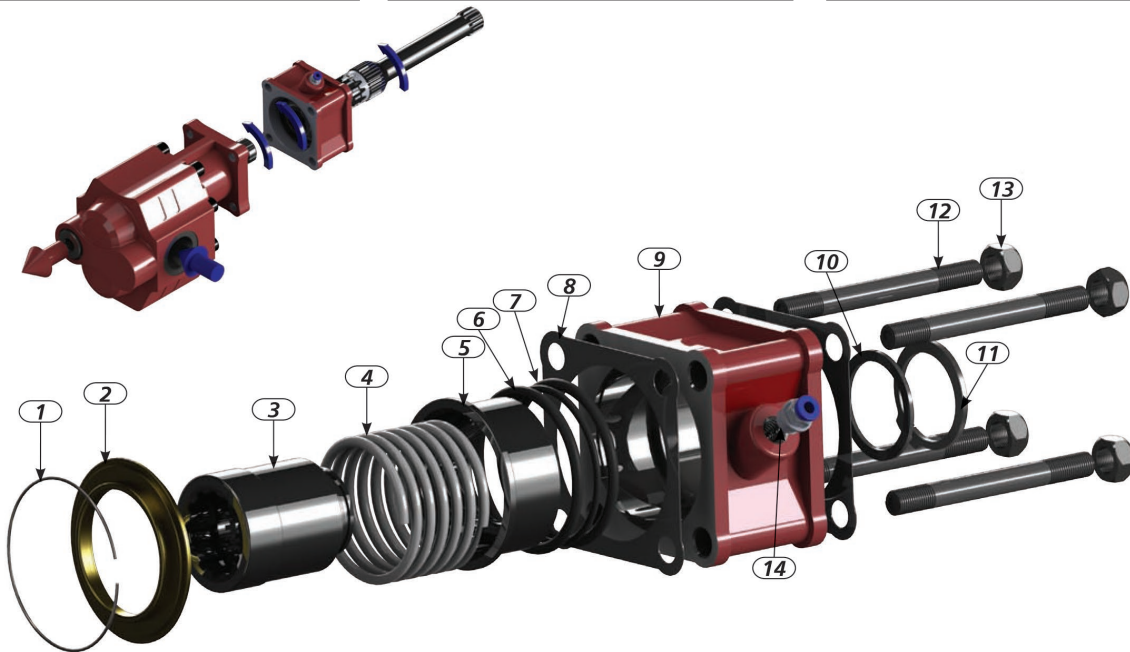




**NOTE:** IF THE MAIN GEARBOX DIRECTION OF ROTATION IS RIGHT; GEAR PUMP MUST BE SELECTED IN THE LEFT DIRECTION.

**NOTE:** IF THE MAIN GEARBOX DIRECTION OF ROTATION IS LEFT; GEAR PUMP MUST BE SELECTED IN THE RIGHT DIRECTION.

**NOTE:** CHECK WHETHER THERE IS TIGHTNESS AND THE OIL OF MAIN GEARBOX AFTER PTO ASSEMBLING.

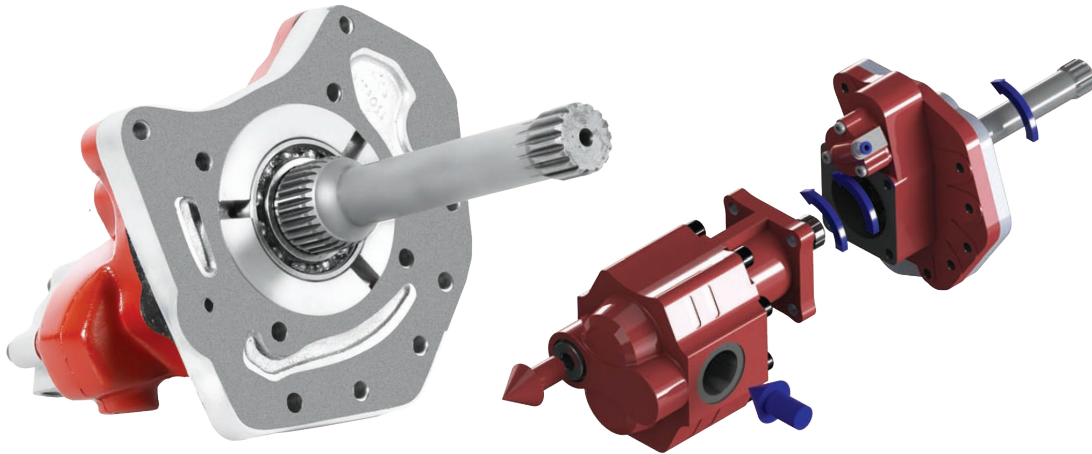


Fluid Temp. °C	Input Working Bar
0 / 90	7 / 12 bar

Code	Power HP at 1000 Rpm	Rotation	Output	Control	Torque Continuous Nm	Torque Max Nm	Ratio	Weight Kg
PTO-ZFCASTING	35	Right(Cw)	ISO	Pneumatic	400	450	1:1	3,5
Main Gearbox: ZF 16S130-150-151-221-251 ZF S5/AK/6S-92-110-11-120								
Test: 15 sec								

**PTO-ATROSCASTING**

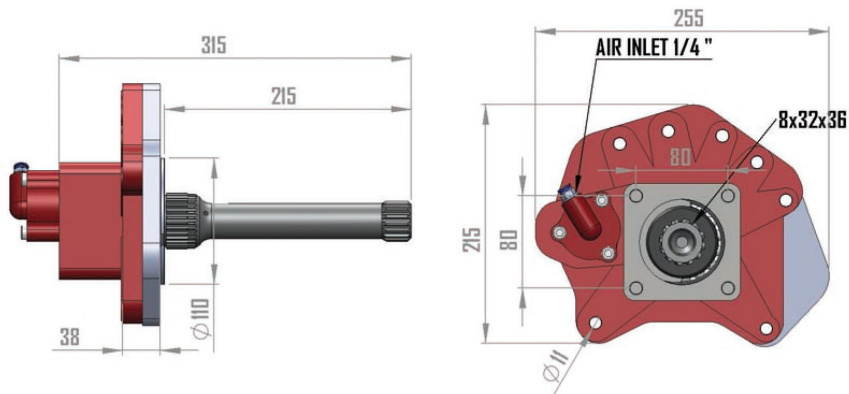
**Power Take Off Actros A Casting**



**NOTE:** CHECK WHETHER THERE IS TIGHTNESS AND THE OIL OF MAIN GEARBOX AFTER PTO ASSEMBLING.

**NOTE:** IF THE MAIN GEARBOX DIRECTION OF ROTATION IS RIGHT; GEAR PUMP MUST BE SELECTED IN THE LEFT DIRECTION.

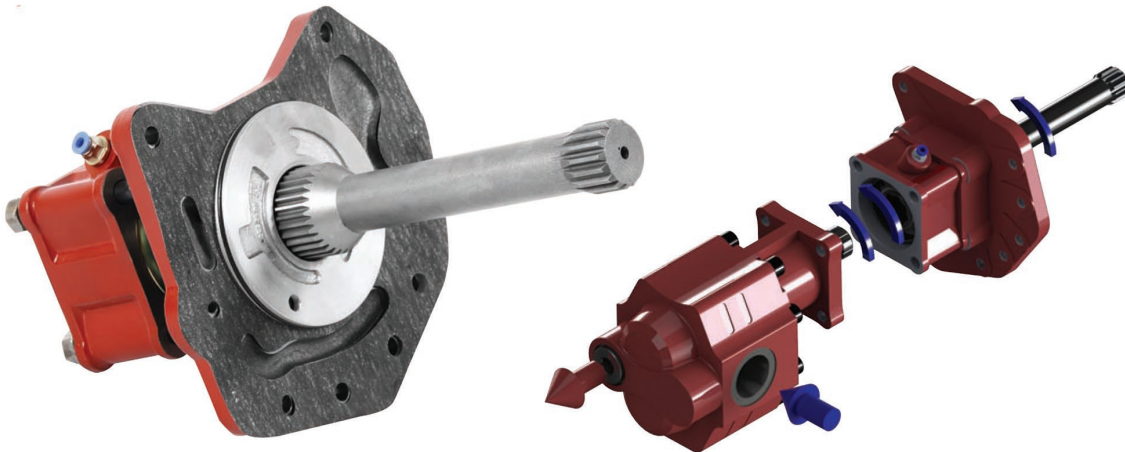
**NOTE:** IF THE MAIN GEARBOX DIRECTION OF ROTATION IS LEFT ; GEAR PUMP MUST BE SELECTED IN THE RIGHT DIRECTION.



Fluid Temp. °C	Input Working Bar
0 / 90	7 / 12 bar

Code	Power HP at 1000 Rpm	Rotation	Output	Control	Torque Continuous Nm	Torque Max Nm	Ratio	Weight Kg
PTO-ATROSCASTING	20	Right (Cw)	ISO	Pneumatic	250	280	1:1	9,8

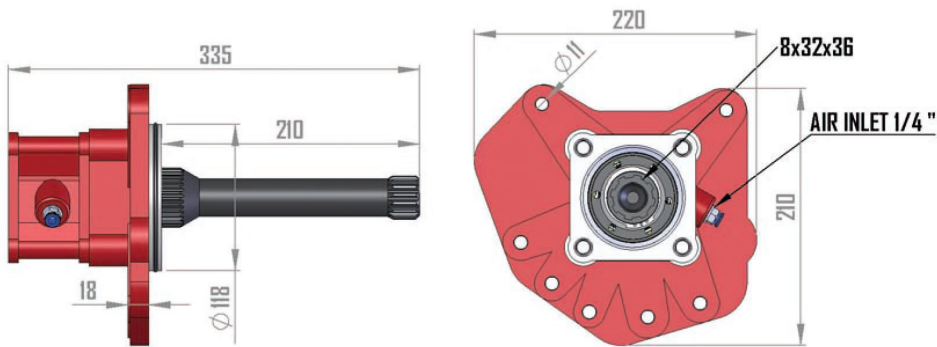
Main Gearbox: For G100  
 Test: 15 sec



**NOTE:** CHECK WHETHER THERE IS TIGHTNESS AND THE OIL OF MAIN GEARBOX AFTER PTO ASSEMBLING.

**NOTE:** IF THE MAIN GEARBOX DIRECTION OF ROTATION IS RIGHT; GEAR PUMP MUST BE SELECTED IN THE LEFT DIRECTION.

**NOTE:** IF THE MAIN GEARBOX DIRECTION OF ROTATION IS LEFT ; GEAR PUMP MUST BE SELECTED IN THE RIGHT DIRECTION.



Fluid Temp. °C	Input Working Bar
0 / 90	7 / 12 bar

Code	Power HP at 1000 Rpm	Rotation	Output	Control	Torque Continuous Nm	Torque Max Nm	Ratio	Weight Kg
PTO-ATROSBCASTING	20	Right (Cw)	ISO	Pneumatic	250	280	1:1	11
Main Gearbox: G 125-155-180-200-210-221-240-255-260								
Test: 15 sec								

# PTO-VOLVORCASTING

## Power Take Off Volvo R Casting

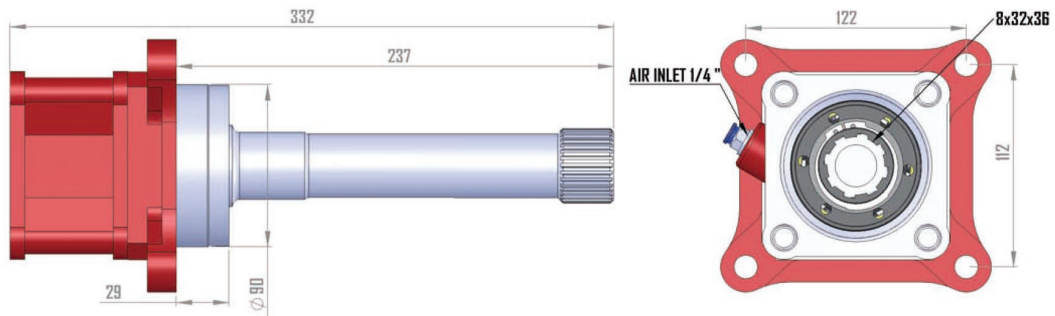


Fluid Temp. °C	Input Working Bar
0/90	7/12 bar

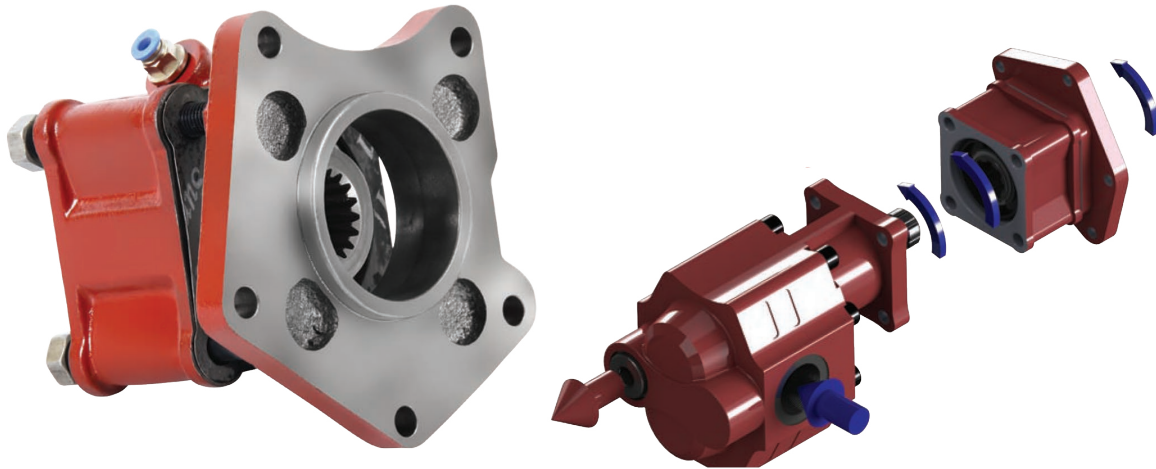
**NOTE:** IF THE MAIN GEARBOX DIRECTION OF ROTATION IS RIGHT; GEAR PUMP MUST BE SELECTED IN THE LEFT DIRECTION.

**NOTE:** CHECK WHETHER THERE IS TIGHTNESS AND THE OIL OF MAIN GEARBOX AFTER PTO ASSEMBLING.

**NOTE:** IF THE MAIN GEARBOX DIRECTION OF ROTATION IS LEFT ; GEAR PUMP MUST BE SELECTED IN THE RIGHT DIRECTION.



Code	Power HP at 1000 Rpm	Rotation	Output	Control	Torque Continuous Nm	Torque Max Nm	Ratio	Weight Kg
PTO-VOLVORCASTING	24	Right(Cw)	ISO	Pneumatic	250	280	1:1	6.4
Main Gearbox: SR 1400-1700-2000-SR0 2400 VT 2014-2415								
Test: 15 sec								

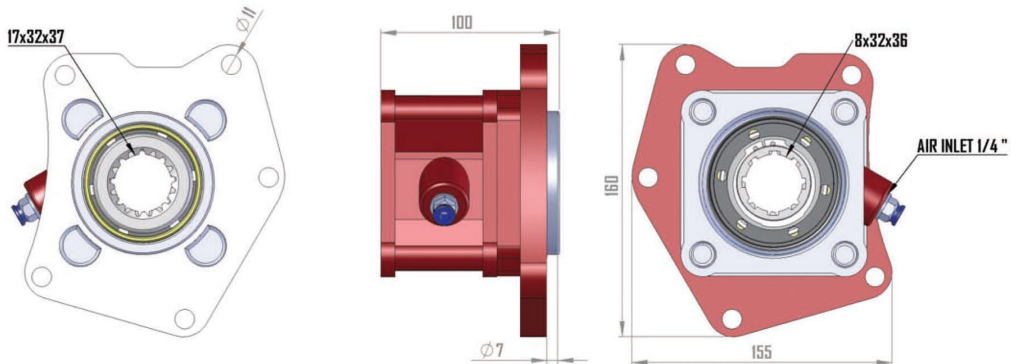


Fluid Temp. °C	Input Working Bar
0/90	7/12 bar

**NOTE:** CHECK WHETHER THERE IS TIGHTNESS AND THE OIL OF MAIN GEARBOX AFTER PTO ASSEMBLING.

**NOTE:** IF THE MAIN GEARBOX DIRECTION OF ROTATION IS RIGHT; GEAR PUMP MUST BE SELECTED IN THE LEFT DIRECTION.

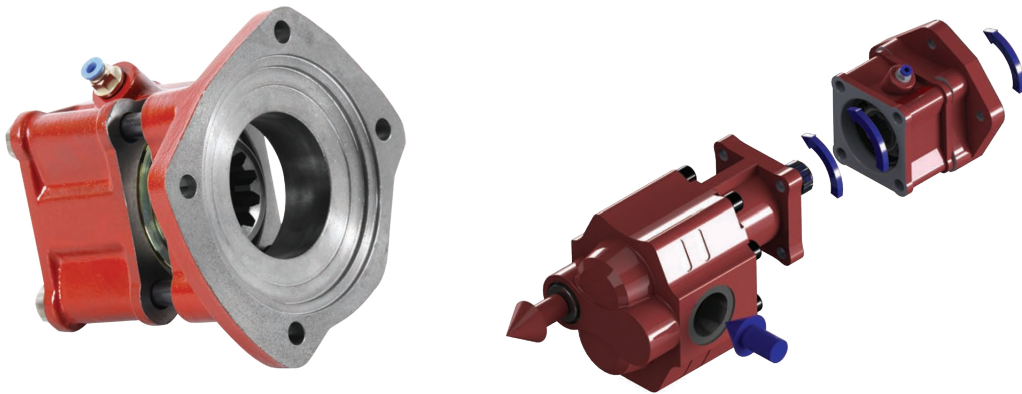
**NOTE:** IF THE MAIN GEARBOX DIRECTION OF ROTATION IS LEFT ; GEAR PUMP MUST BE SELECTED IN THE RIGHT DIRECTION.



Code	Power HP at 1000 Rpm	Rotation	Output	Control	Torque Continuous Nm	Torque Max Nm	Ratio	Weight Kg
PTO-352CASTING	23	Right(Cw)	ISO	Pneumatic	250	280	1:1	5,8
Main Gearbox: G3/32-36-40-45-50-55-60-61								
Test: 15 sec								

# PTO-VOLVOF12CAST

## Power Take Off Volvo F12 Casting

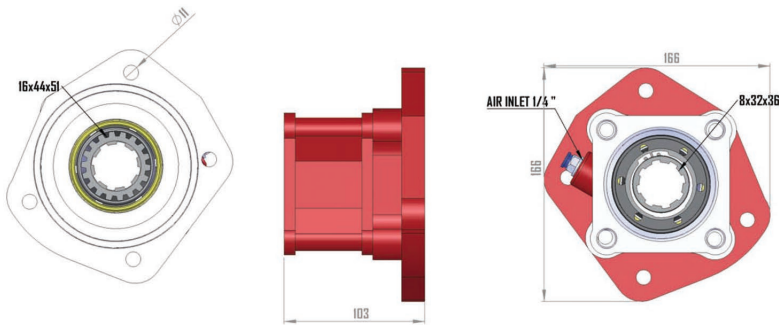


Fluid Temp. °C	Input Working Bar
0/90	7/12 bar

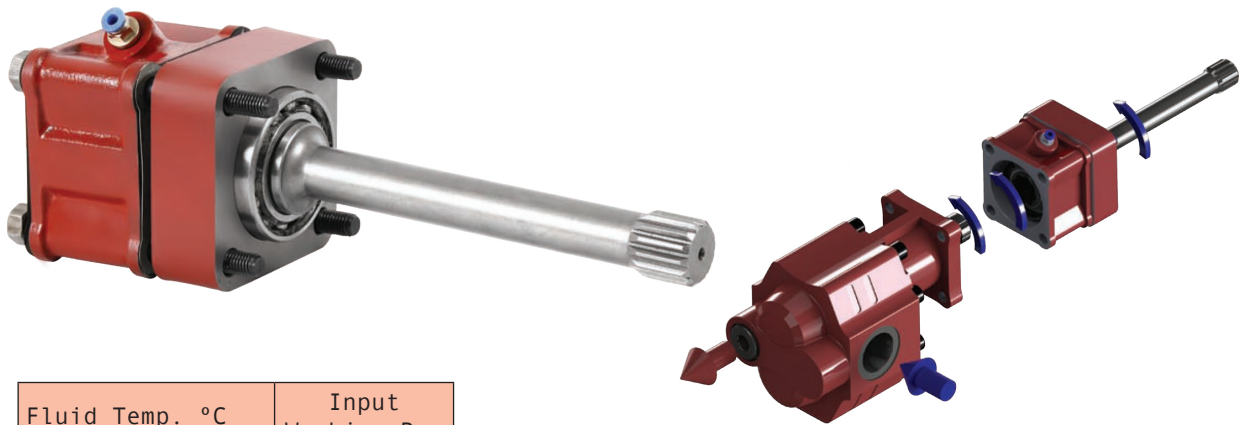
**NOTE:** IF THE MAIN GEARBOX DIRECTION OF ROTATION IS RIGHT; GEAR PUMP MUST BE SELECTED IN THE LEFT DIRECTION.

**NOTE:** CHECK WHETHER THERE IS TIGHTNESS AND THE OIL OF MAIN GEARBOX AFTER PTO ASSEMBLING.

**NOTE:** IF THE MAIN GEARBOX DIRECTION OF ROTATION IS LEFT ; GEAR PUMP MUST BE SELECTED IN THE RIGHT DIRECTION.



Code	Power HP at 1000 Rpm	Rotation	Output	Control	Torque Continuous Nm	Torque Max Nm	Ratio	Weight Kg
PTO-VOLVOF12CAST	23	Right (Cw)	ISO	Pneumatic	250	280	1:1	5,8
Main Gearbox: R 62-SR61-R62/MR62 B								
Test: 15 sec								

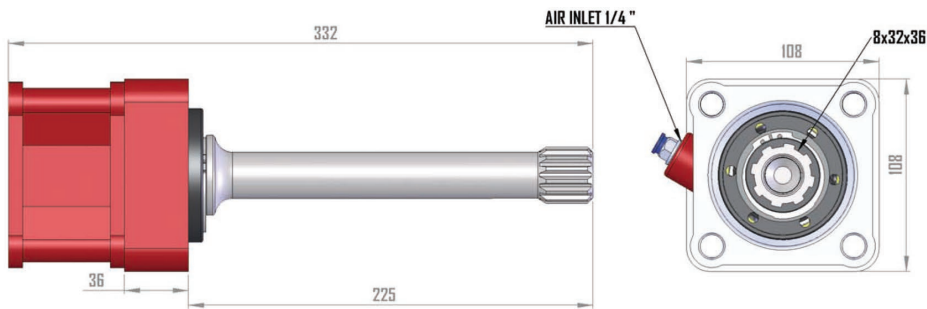


Fluid Temp. °C	Input Working Bar
0/90	7/12 bar

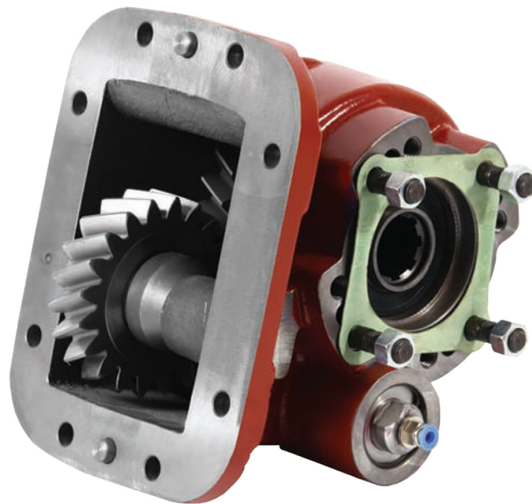
**NOTE:** IF THE MAIN GEARBOX DIRECTION OF ROTATION IS RIGHT; GEAR PUMP MUST BE SELECTED IN THE LEFT DIRECTION.

**NOTE:** CHECK WHETHER THERE IS TIGHTNESS AND THE OIL OF MAIN GEARBOX AFTER PTO ASSEMBLING.

**NOTE:** IF THE MAIN GEARBOX DIRECTION OF ROTATION IS LEFT ; GEAR PUMP MUST BE SELECTED IN THE RIGHT DIRECTION.



Code	Power HP at 1000 Rpm	Rotation	Output	Control	Torque Continuous Nm	Torque Max Nm	Ratio	Weight Kg
PTO-MANCASTING	23	Right (Cw)	ISO	Pneumatic	250	280	1:1	7
Main Gearbox: For Man								
Test: 15 sec								

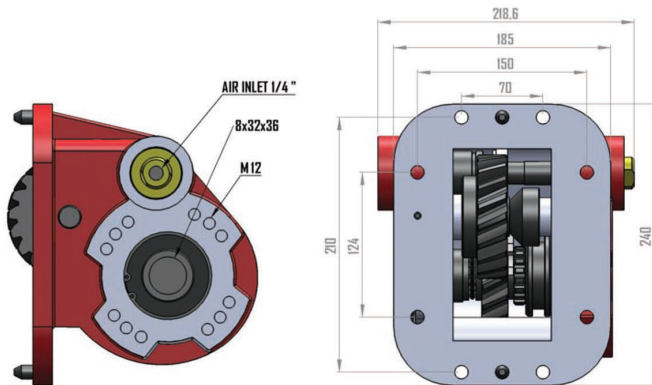


Fluid Temp. °C	Input Working Bar
0/90	7/12 bar

**NOTE:** IF THE MAIN GEARBOX DIRECTION OF ROTATION IS RIGHT; GEAR PUMP MUST BE SELECTED IN THE LEFT DIRECTION.

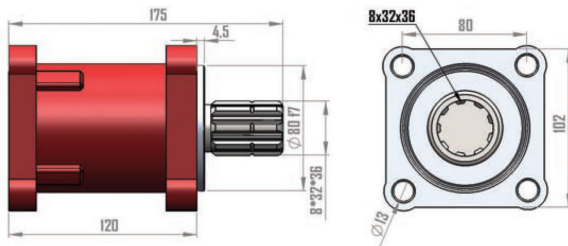
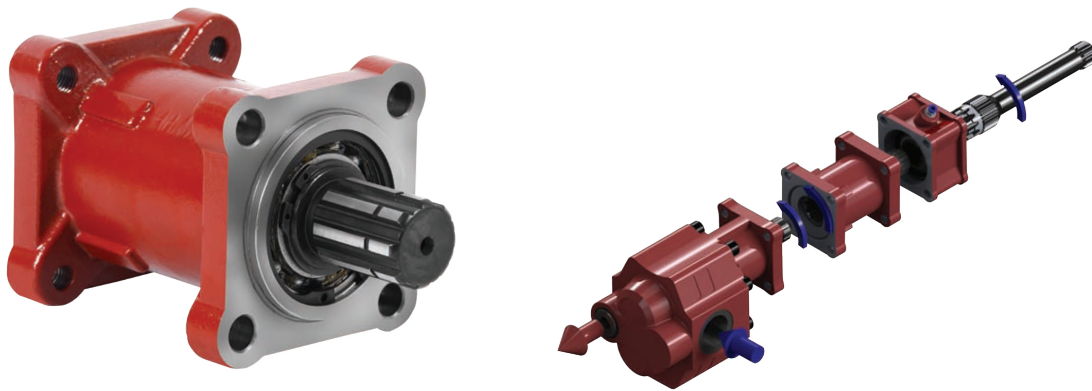
**NOTE:** CHECK WHETHER THERE IS TIGHTNESS AND THE OIL OF MAIN GEARBOX AFTER PTO ASSEMBLING.

**NOTE:** IF THE MAIN GEARBOX DIRECTION OF ROTATION IS LEFT ; GEAR PUMP MUST BE SELECTED IN THE RIGHT DIRECTION.



Code	Power HP at 1000 Rpm	Rotation	Output	Control	Torque Continuous Nm	Torque Max Nm	Ratio	Weight Kg
PTO-GRS900ISOCAST	30	Right (Cw)	ISO	Pneumatic	250	280	1:0,98	19,8
Main Gearbox: GRS 900-GRS 890-GRS 920								
Test: 15 sec								



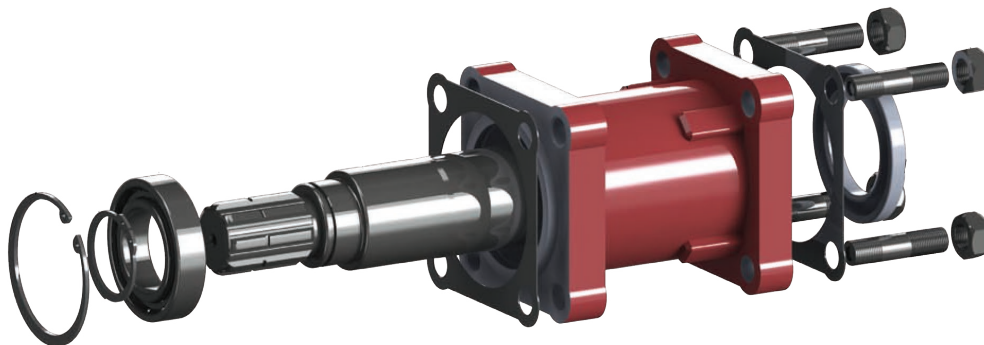


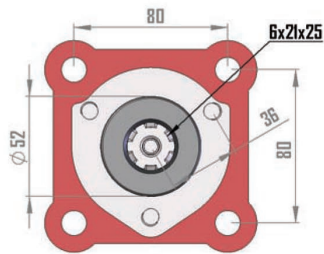
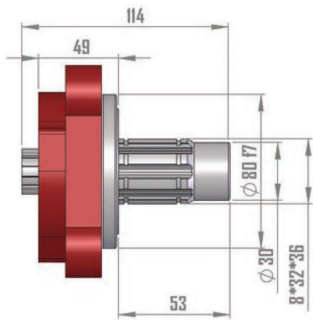
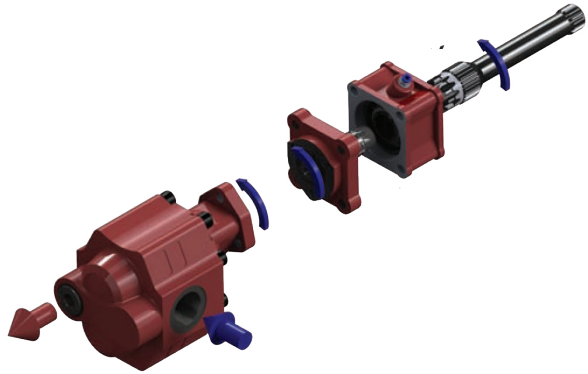
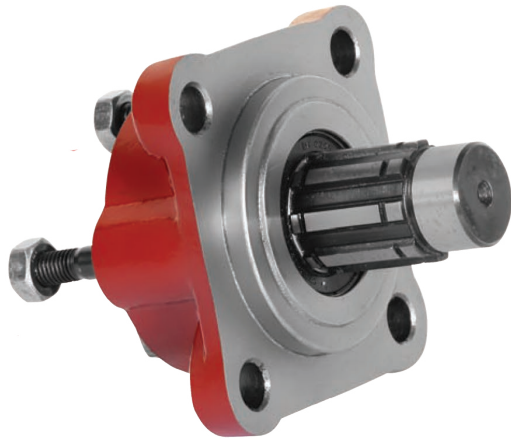
Weight Kg.	Fluid Temp. °C
4,5	0/90

**NOTE:** IF THE MAIN GEARBOX DIRECTION OF ROTATION IS RIGHT; GEAR PUMP MUST BE SELECTED IN THE LEFT DIRECTION.

**NOTE:** CHECK WHETHER THERE IS TIGHTNESS AND THE OIL OF MAIN GEARBOX AFTER PTO ASSEMBLING.

**NOTE:** IF THE MAIN GEARBOX DIRECTION OF ROTATION IS LEFT ; GEAR PUMP MUST BE SELECTED IN THE RIGHT DIRECTION.



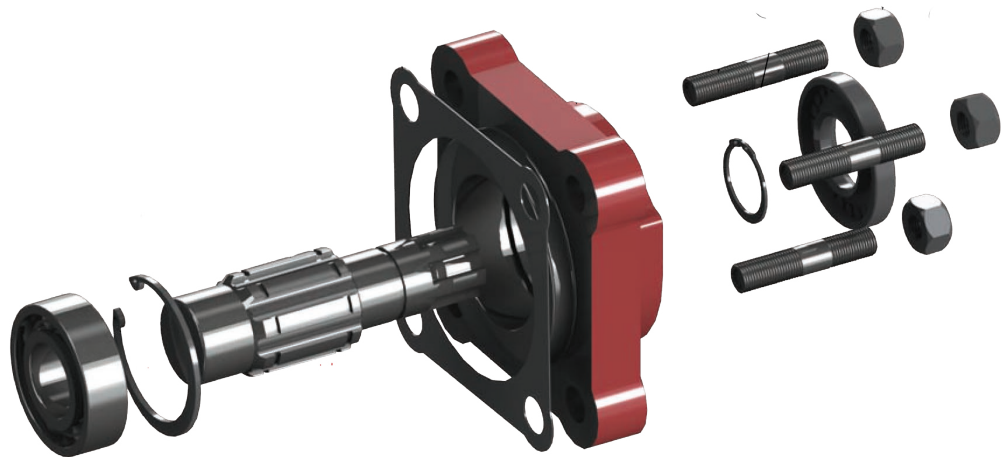


Weight Kg.
2,4

**NOTE:** IF THE MAIN GEARBOX DIRECTION OF ROTATION IS RIGHT; GEAR PUMP MUST BE SELECTED IN THE LEFT DIRECTION.

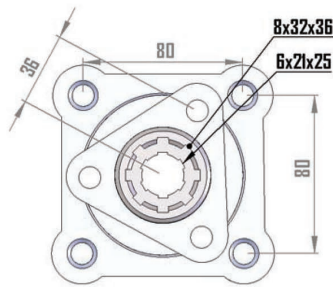
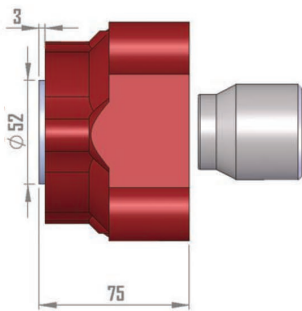
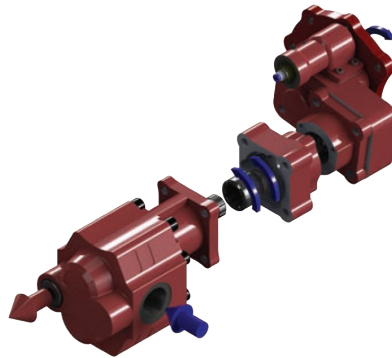
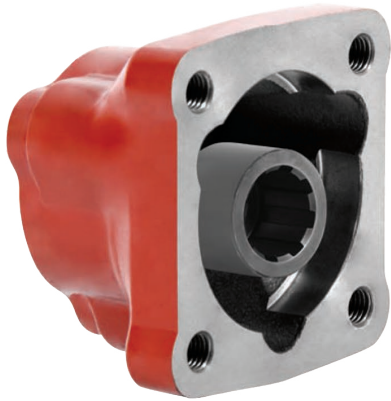
**NOTE:** IF THE MAIN GEARBOX DIRECTION OF ROTATION IS LEFT ; GEAR PUMP MUST BE SELECTED IN THE RIGHT DIRECTION.

**NOTE:** CHECK WHETHER THERE IS TIGHTNESS AND THE OIL OF MAIN GEARBOX AFTER PTO ASSEMBLING.



# PTO-PPADAPTOR

## Power Take Off Piston Pump Adaptor

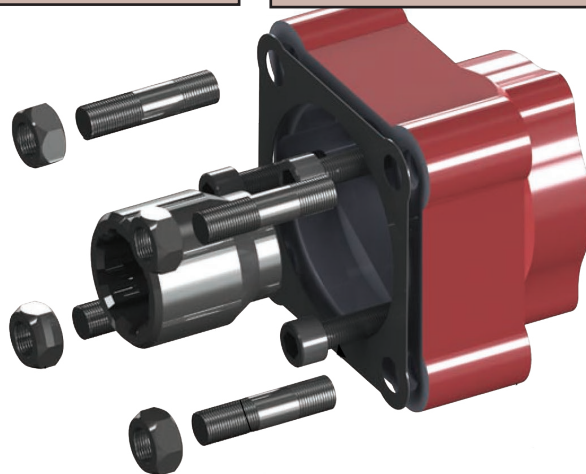


Weight Kg.
2,5

**NOTE:** IF THE MAIN GEARBOX DIRECTION OF ROTATION IS LEFT; GEAR PUMP MUST BE SELECTED IN THE RIGHT DIRECTION.

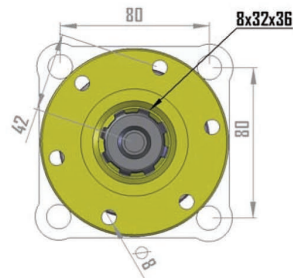
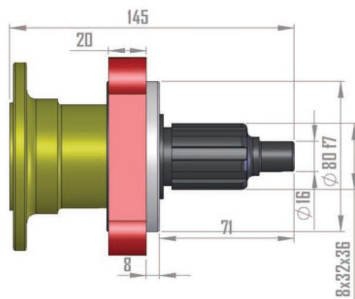
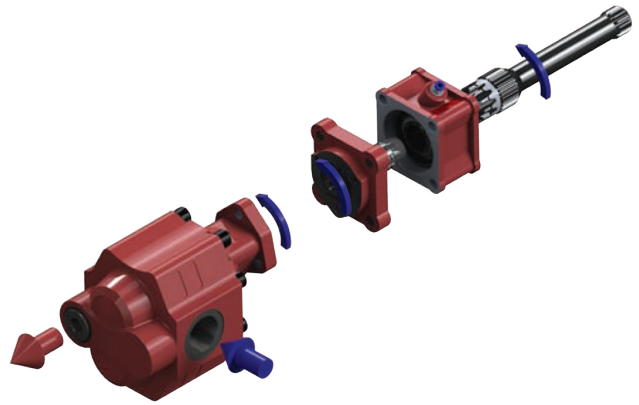
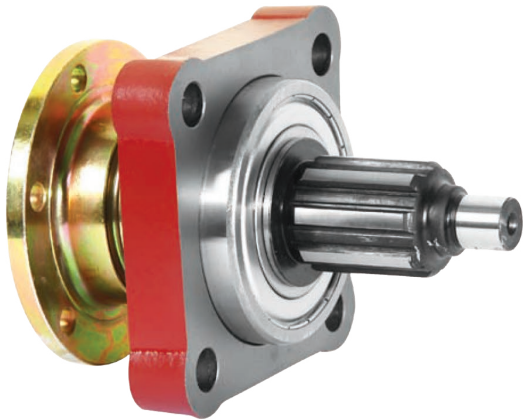
**NOTE:** IF THE MAIN GEARBOX DIRECTION OF ROTATION IS RIGHT; GEAR PUMP MUST BE SELECTED IN THE LEFT DIRECTION.

**NOTE:** CHECK WHETHER THERE IS TIGHTNESS AND THE OIL OF MAIN GEARBOX AFTER PTO ASSEMBLING.



# PTO-ZFADAPTOR

## Power Take Off ZF Adaptor

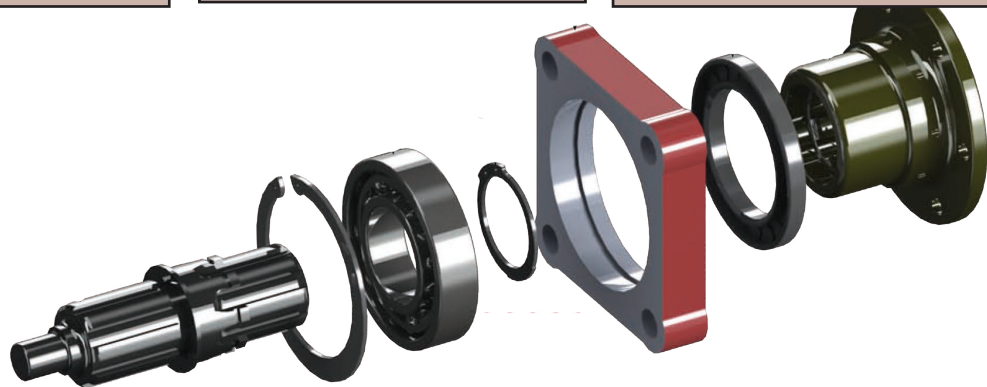


Weight Kg.
2,9

**NOTE:** CHECK WHETHER THERE IS TIGHTNESS AND THE OIL OF MAIN GEARBOX AFTER PTO ASSEMBLING.

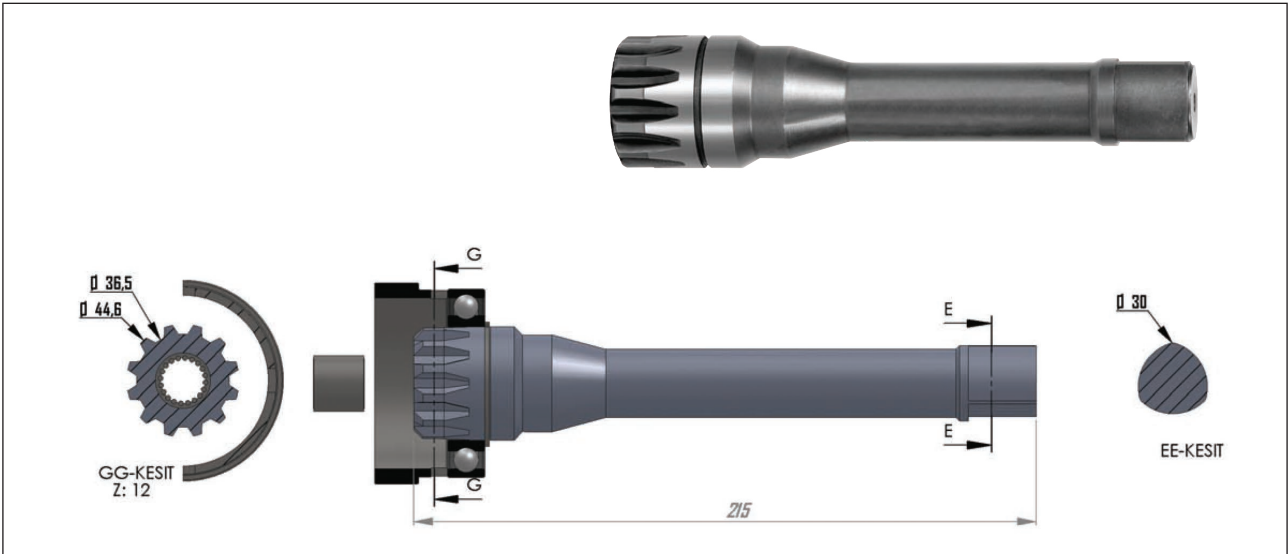
**NOTE:** IF THE MAIN GEARBOX DIRECTION OF ROTATION IS RIGHT; GEAR PUMP MUST BE SELECTED IN THE LEFT DIRECTION.

**NOTE:** IF THE MAIN GEARBOX DIRECTION OF ROTATION IS LEFT ; GEAR PUMP MUST BE SELECTED IN THE RIGHT DIRECTION.



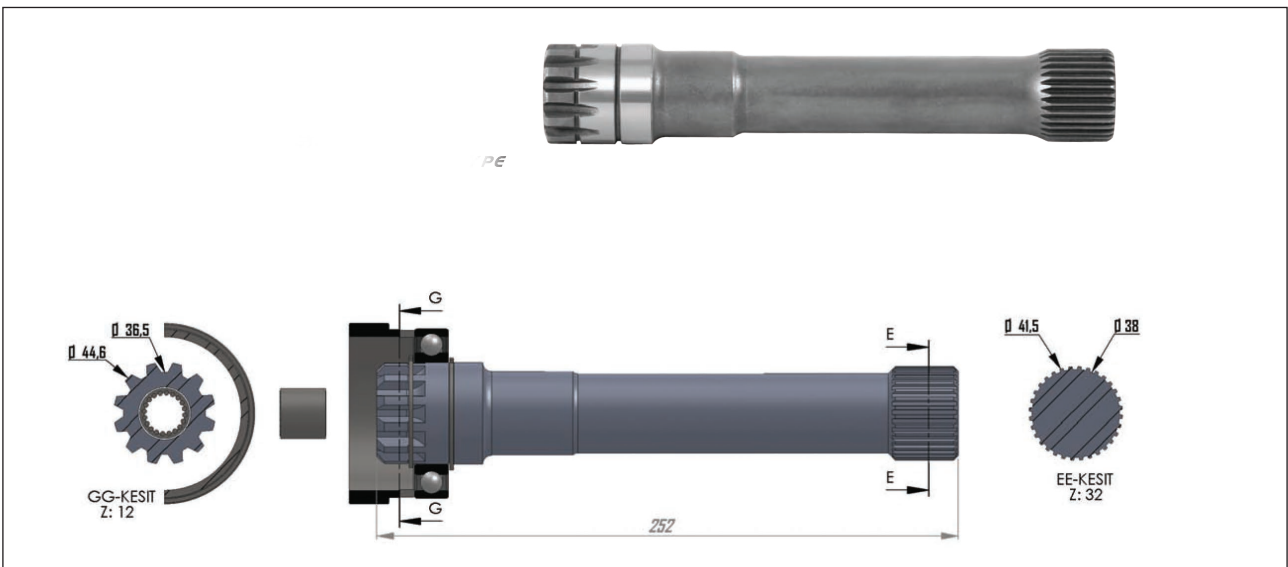
**PTO-16K160CS250MM**

**16S 130 Cardan Shaft 215mm**



**PTO-VOLVORCS252**

**Volvo R Cardan Shaft 252mm**





## Notes