

13 flow control valves

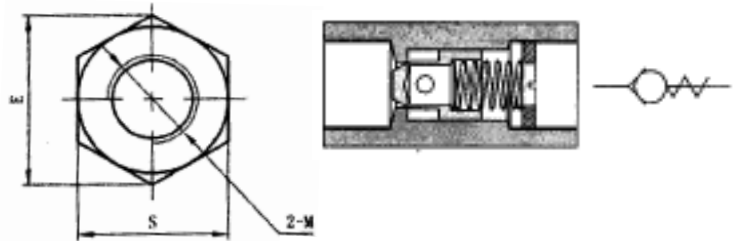
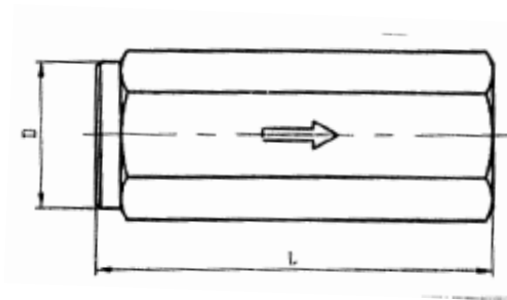
Check Valves	Sec13:2
High Pressure Ball Valves	Sec13:3
Diverter Valves	Sec13:4
Flow Control Valves	Sec13:5
Relief Valves Inline	Sec13:8
Overcentre Valves	Sec13:9
Low Pressure Ball Valves	Sec13:9
Brand Flow Control Valves	Sec13:10

Check Valves

check valve - inline



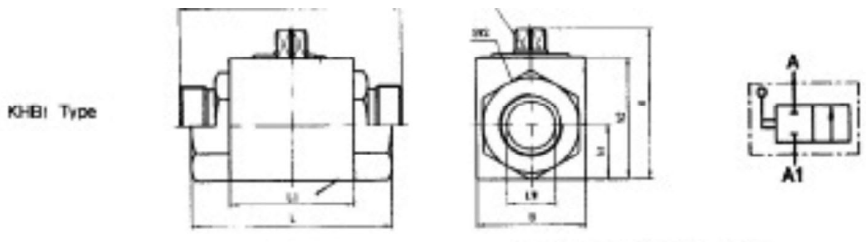
- 8 sizes – flows to 460 lpm
- Maximum working pressure – 200 bar
- Choice of cracking pressure 0.5 / 3.5 bar - Standard 0.5 bar
- Steel poppet type construction
- Prevents flow in reverse direction
- Suited for mineral / petroleum based oils
- Not recommended for use to check reverse flow as this can result in shock conditions



Part Number	Thread Size BSP	Max flow (l/min)	Dimensions					Retail price R
			L	E	S	D	T	
VU08	1/4	30	62	21.5	19	19	12	
VU10	3/8	45	68	27.5	24	24	14	
VU12	1/2	70	77	34.5	30	30	15	
VU16	3/4	110	88	41.5	36	36	16	
VU20	1	160	105	47	41	41	18	
VU25	1 1/4	210	130	63	55	55	20	
VU30	1 1/2	320	138	75	65	65	22	
VU40	2	460	160	92	80	80	24	

High Pressure Ball Valves

2-way high pressure ball valves



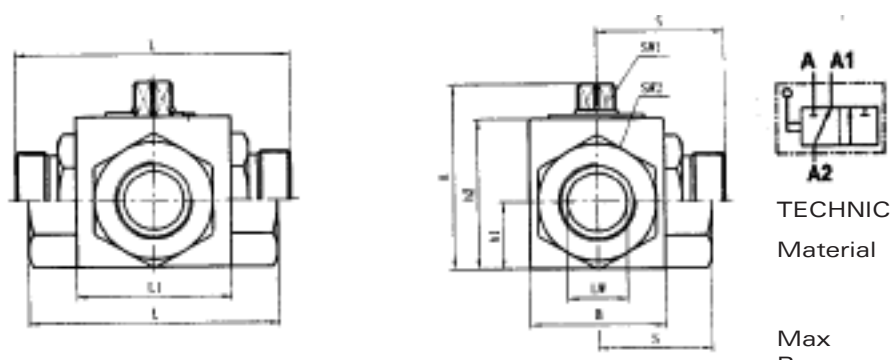
TECHNICAL SPECIFICATIONS

Material Body is in steel
Internal Parts are in hardened steel

Max Pressure See data sheet

Part number	Max pressure	DN mm	BSP Port size	LW	L	L11	B	H	h1	h2	SW1	SW2	Retail price R
KHBG 1/8	500 bar	4	1/8	6	69	40	26	45	13.5	33	9	22	
KHBG 1/4	500 bar	6	1/4	6	69	40	26	45	13.5	33	9	22	
KHBG 3/8	500 bar	10	3/8	10	72	42	32	49	16	36	9	27	
KHBG 1/2	500 bar	13	1/2	12	83	48	35	49	17	40	9	30	
KHBG 3/4	315 bar	20	3/4	20	95	60	48	70	25	55	12	41	
KHBG 1	315 bar	25	1	25	113	65	57	79	28.5	64	12	50	
KHBG 1 1/4	315 bar	32	1 1/4	32	110	84	75	101	37.5	84	14	60	
KHBG 1 1/2	315 bar	40	1 1/2	38	130	91	85	112	42.5	95	14	70	
KHBG 2	315 bar	50	2	48	140	100	105	131	52.5	112	14	80	

3-way high pressure ball valves L porting



TECHNICAL SPECIFICATIONS

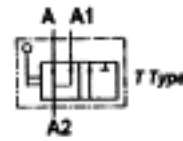
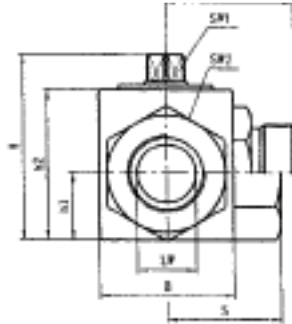
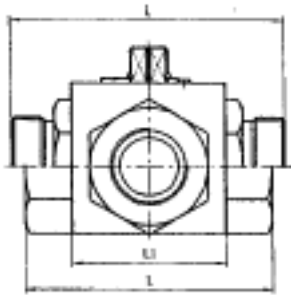
Material Body is in steel
Internal Parts are in hardened steel

Max Pressure See data sheet

Part number	Max press (bar)	DN mm	BSP Port size	LW	L	L11	B	H	h1	h2	SW1	SW2	S	Retail price R
KHB3K-G 1/8L	500	4	1/8	6	69	40	26	45	13.5	33	9	22	35	
KHB3K-G 1/4L	500	6	1/4	6	69	40	26	45	13.5	33	9	22	35	
KHB3K-G 3/8L	500	10	3/8	10	72	42	32	49	16	36	9	27	36	
KHB3K-G 1/2L	500	13	1/2	12	83	48	35	49	17	40	9	30	40	
KHB3K-G 3/4L	315	20	3/4	20	95	60	48	70	25	55	12	41	49	
KHB3K-G 1L	315	25	1	25	113	65	57	79	28.5	64	12	50	56.5	
KHB3K-G 1 1/4L	315	32	1 1/4	32	110	84	75	101	37.5	84	14	60	62.5	
KHB3K-G 1 1/2L	315	40	1 1/2	38	130	91	85	112	42.5	95	14	70	61	
KHB3K-G 2L	315	50	2	48	140	100	105	131	52.5	112	14	80	62.5	

Flow Control Valves

3-way high pressure ball valves T porting



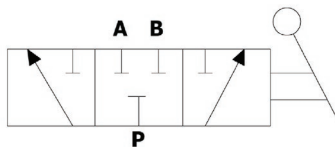
TECHNICAL SPECIFICATIONS

Material Body is in steel
Internal Parts are in hardened steel

Max Pressure See data sheet

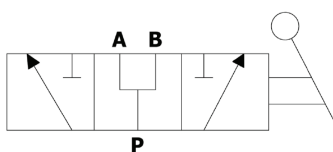
Part number	Max press (bar)	DN mm	BSP Port size	LW	L	L11	B	H	h1	h2	SW1	SW2	S	Retail price R
KHB3K-G 1/8T	500	4	1/8	6	69	40	26	45	13.5	33	9	22	35	
KHB3K-G 1/4T	500	6	1/4	6	69	40	26	45	13.5	33	9	22	35	
KHB3K-G 3/8T	500	10	3/8	10	72	42	32	49	16	36	9	27	36	
KHB3K-G 1/2T	500	13	1/2	12	83	48	35	49	17	40	9	30	40	
KHB3K-G 3/4T	315	20	3/4	20	95	60	48	70	25	55	12	41	49	
KHB3K-G 1T	315	25	1	25	113	65	57	79	28.5	64	12	50	56.5	
KHB3K-G 1 1/4T	315	32	1 1/4	32	110	84	75	101	37.5	84	14	60	62.5	
KHB3K-G 1 1/2T	315	40	1 1/2	38	130	91	85	112	42.5	95	14	70	61	
KHB3K-G 2T	315	50	2	48	140	100	105	131	52.5	112	14	80	62.5	

Diverter Valves (normally closed)



Part number	Thread	Q Max l/min	P Max bar	Retail price R
DIV0600	3/8	60	315	
DIV0800	1/2	90	280	
DIV1200	3/4	120	250	
DIV1600	1	180	250	

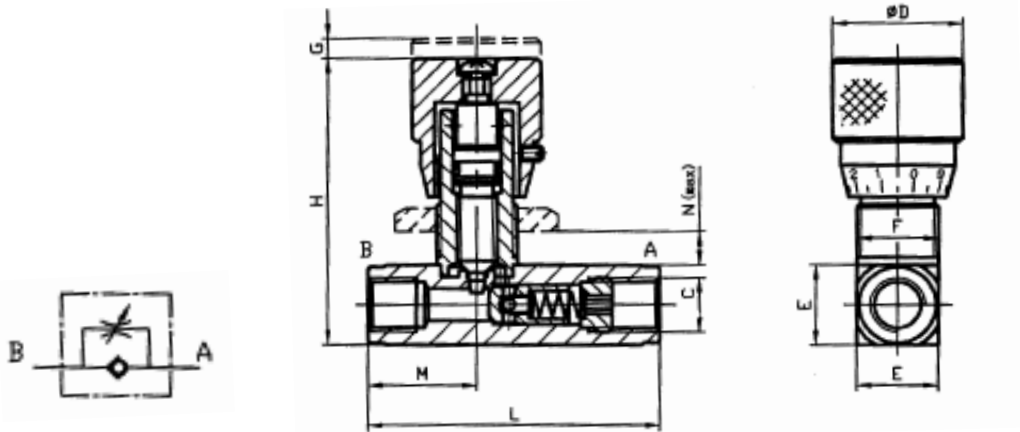
Diverter Valves (normally open)



Part number	Thread	Q Max l/min	P Max bar	Retail price R
DIV0600N0	3/8	60	315	
DIV0800N0	1/2	90	280	
DIV1200N0	3/4	120	250	
DIV1600N0	1	180	250	

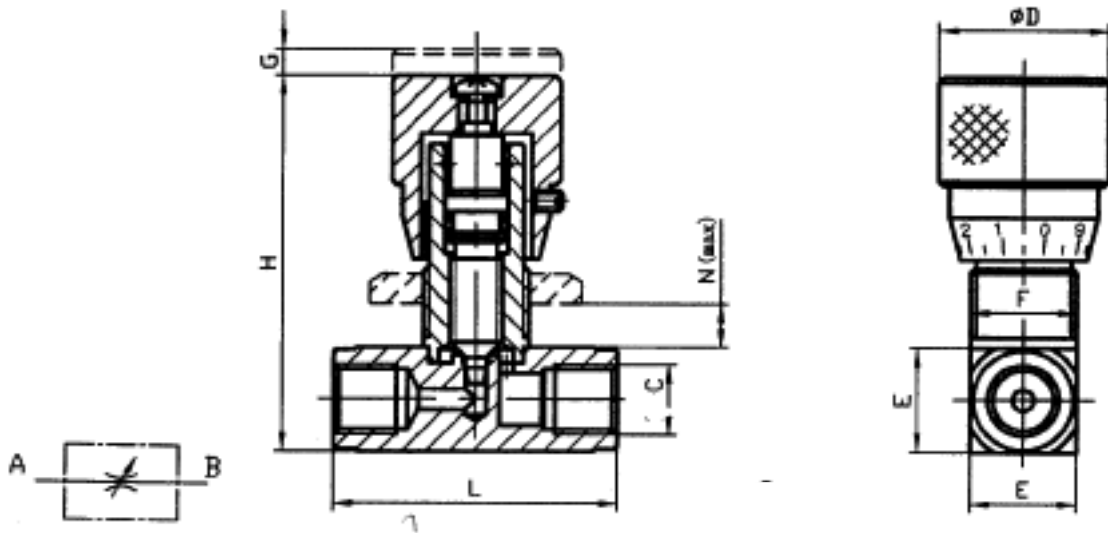
Flow Control Valves

in-line flow control check valves



Part number	Thread C	Max Flow	Max Press	L	H	D	E	F	G	M	N	Retail price R
	BSP	L/Min	Bar	mm	mm	mm	mm	mm	mm	mm	mm	
STU0400	1/4	12	400	73	72	32	20	M20X1	5	27	7	
STU0600	3/8	30	400	82	80	32	25	M25X1,5	9	31	7	
STU0800	1/2	50	400	98	92	45	30	M30X1,5	9	36.5	9	
STU1200	3/4	85	400	112	100	45	40	M35X1,5	10	42	11	
STU01600	1	150	320	142	122	45	45	M40X1.5	12	51	15	

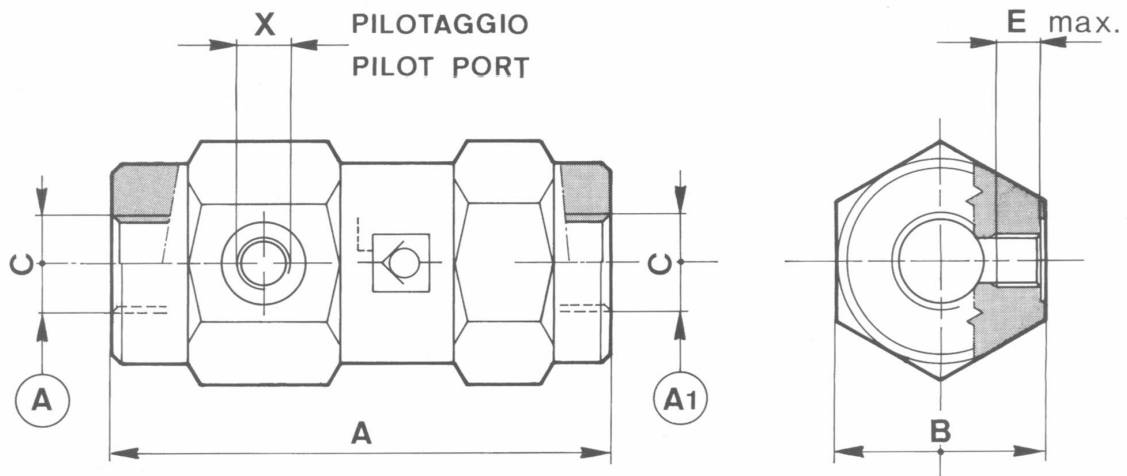
in-line needle valves



Part number	Thread C	Max Flow	Max Pressure	L	H	D	E	F	G	N	Retail price R
	BSP	L/Min	Bar	mm	mm	mm	mm	mm	mm	mm	
STB0400	1/4	12	400	54	72	32	20	M20X1	5	7	
STB0600	3/8	30	400	62	80	32	25	M25X1,5	9	7	
STB0800	1/2	50	400	73	92	45	30	M30X1,5	9	9	
STB1200	3/4	85	400	84	100	45	40	M35X1,5	10	11	
STB01600	1	150	320	102	122	45	45	M40X1.5	12	15	

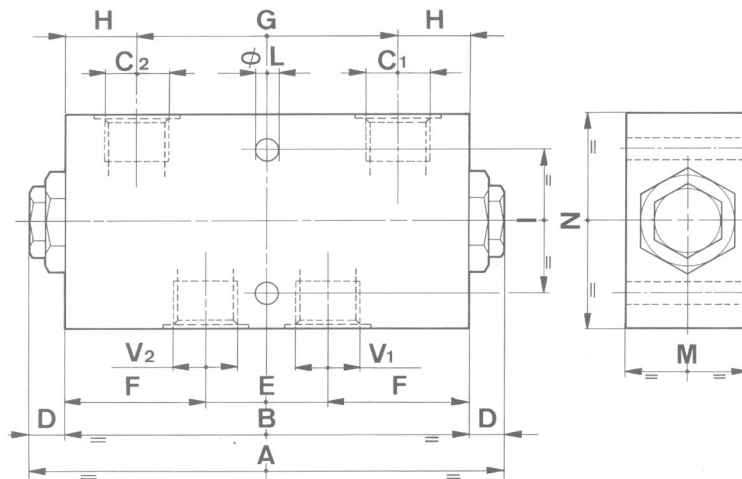
Flow Control Valves

in-line pilot check valves (barrel type)



Part number	Max flow	Max pressure	A	B	C	X	E	Retail price R
	L/Min	Bar						
FPS 1/4	12	350	103	36	1/4	1/4	11	
FPS 3/8	30	310	109	40	3/8	1/4	11.5	
FPS 1/2	45	310	120	42	1/2	1/4	11	
FPS 3/4	85	300	131	55	3/4	1/4	14	

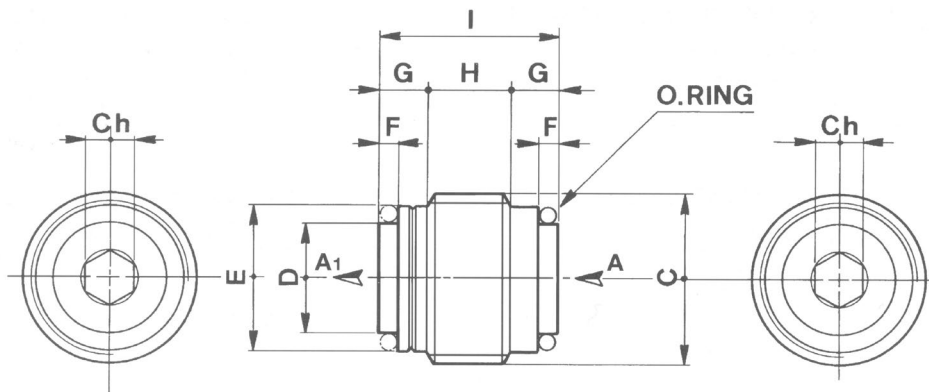
dual pilot check valve



Part Number	Max Flow	Max Press	V1-C1 V2-C2	A	B	D	E	F	G	H	I	L	M	N	Retail price R
	L/min	Bar													
FPDL 3/8	30	350	3/8	127	90	18.5	32	29	62	14	40	6.5	35	60	
FPDL 1/2	45	350	1/2	138	110	14.5	34	38	68	21	40	8.5	35	70	
FPDL 3/4	85	300	3/4	193	165	14	50	57.5	107	29	60	8.5	50	90	

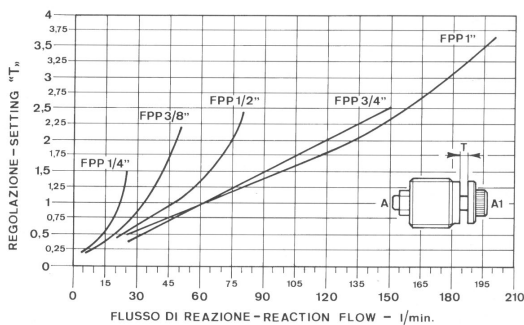
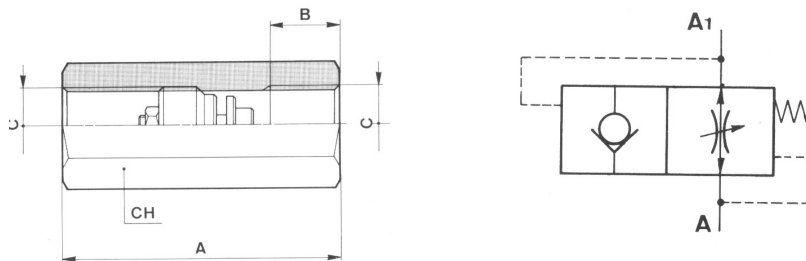
Flow Control Valves

cartridge insert check valves



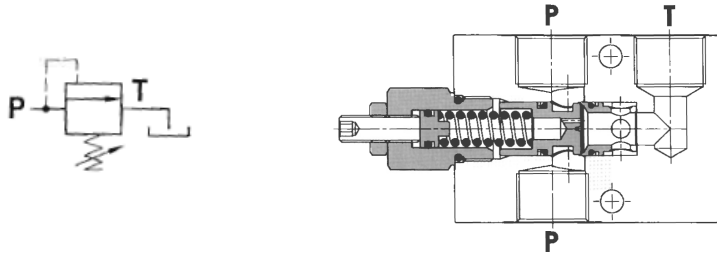
Part number	Max flow L/Min	Max pressure Bar	C BSP	D mm	E mm	F mm	G mm	H mm	I mm	CH mm	Retail price R
FPRI 1/4	15	350	1/4	9.2	11.3	1	5.5	6	17.5	4	
FPRI 3/8	30	350	3/8	11	14.8	1.8	5.3	7.5	18.8	5	
FPRI 1/2	45	350	1/2	14.2	18.5	1.8	7	8.5	23	7	
FPRI 3/4	80	300	3/4	19	24.1	2.7	7	13.5	28	10	

hose rupture valve



Part number	A mm	B mm	C BSPP	CH mm	Retail price R
FFP 1/4	48	12	1/4	19	
FFP 3/8	52	12	3/8	22	
FFP 1/2	62	14	1/2	27	
FFP 3/4	72	16	3/4	36	
FFP 1	86	20	1	46	

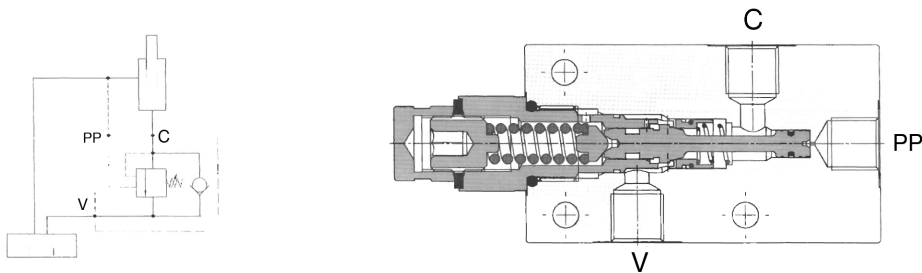
Relief Valves Inline



Part number	Descripton	Port Size	L/Min	Max Pressure/ Bar	Retail price R
RVFPMD40FCB38-35	Relief valve 3/8 BSP	3/8	40	350	
RVFPMD80FCB12-20	Relief valve 1/2 BSP	1/2	80	220	
RVFPMD80FCB34-20	Relief valve 3/4 BSP	3/4	80	220	

Overcentre Valves

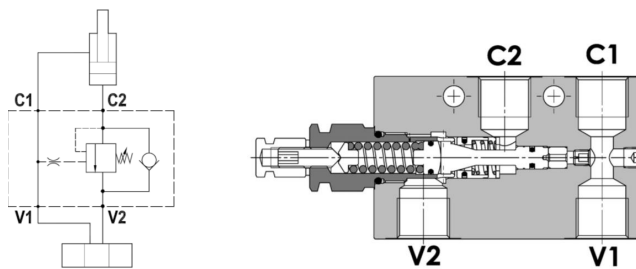
single



Part number	Descripton	BSP Port	Pilot Port	Pilot ratio	L/Min	Max Pressure/ Bar	Retail price R
SOCVF50S14L35	Single overcentre valve 1/4 BSP	1/4	1/4	4,25:1	30	350	
SOCVF50S38L35	Single overcentre valve 3/8 BSP	3/8	1/4	4,25:1	30	350	
SOCVF50S12L35	Single overcentre valve 1/2 BSP	1/2	1/4	4,25:1	50	350	

Overcentre Valves - Internal Pilot

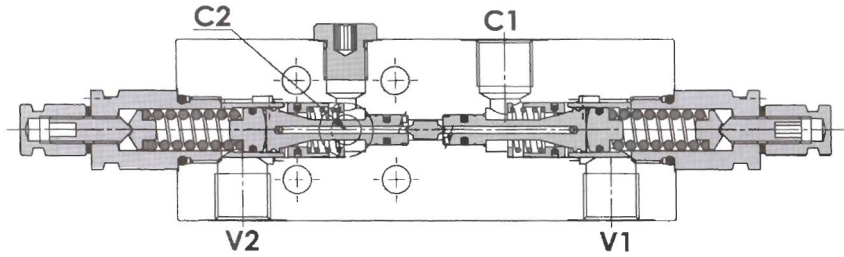
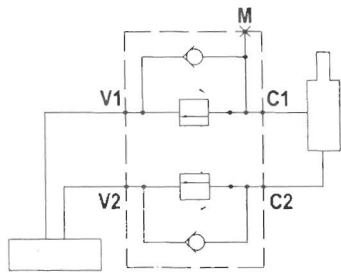
single



Part number	Descripton	BSP Port	Pilot ratio	L/Min	Max Pressure/ Bar	Retail price R
SCCVFP0S14L35	Single overcentre valve 1/4 BSP	1/4	4,25:1	50	350	
SCCVFP0S38L35	Single overcentre valve 3/8 BSP	3/8	4,25:1	50	350	
SCCVFP0S12L35	Single overcentre valve 1/2 BSP	1/2	4,25:1	50	350	

Overcentre Valves

double



Part number	Description	BSP Port	Pilot ratio	L/Min	Max Pressure/Bar	Retail price R
DOCVFP050D38L35	Dual overcentre valve 3/8BSP	3/8	4,25:1	30	350	
DOCVFP050D12L35	Dual overcentre valve 1/2BSP	1/2	4,25:1	50	350	

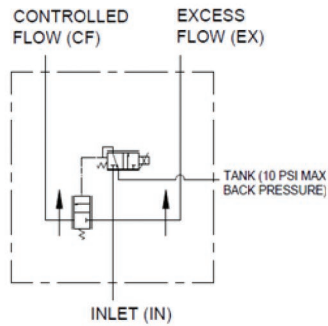
Low Pressure Ball Valves



Part number	DN mm	Port Size BSP	Retail price R
LPF-BV04FR	8	1/4	
LPF-BV06FR	10	3/8	
LPF-BV08FR	15	1/2	
LPF-BV12FR	20	3/4	
LPF-BV16FR	25	1	
LPF-BV20FR	32	1 1/4	
LPF-BV24FR	40	1 1/2	
LPF-BV32FR	50	2	

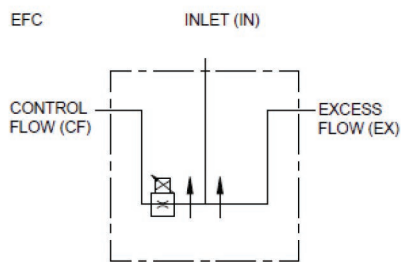
Brand Flow Control Valves

Large Electronically Adjustable Proportional Pressure Compensated Flow Control



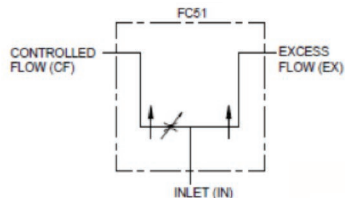
Part Number	Port Size	Flow L/Min	Voltage	Retail Price
BFC-EFC122012020	-12SAE (1 1/16 - 12)	75.7	12V DC	

Electronically Adjustable Proportional Pressure Compensated Flow Control



Part Number	Port Size	Flow L/Min	Voltage	Retail Price
BFC-EFC122012020	-12SAE (1 1/16 - 12)	75.7	12V DC	

Pressure Compensating Variable Flow Control Valves



Part Number	Port Size	Flow L/Min	Retail price R
BFD-FC5112	1/2 NPT	61	
BFD-FC5134	3/4 NPT	114	