

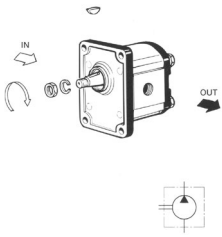
# 21

## gear pumps/motors & accessories

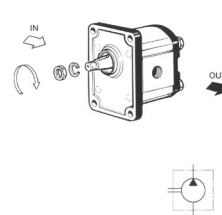
Gear Pumps	Sec:21:2
SAE Bolt Mounting Pumps	Sec:21:6
Deutz Pump with Outboard Bearing	Sec:21:7
Deutz Gear Pumps	Sec:21:7
Gear Motors	Sec:21:8
Inlet / Outlet Combinations	Sec:21:9
Dimension	Sec21:10
Bellhousings for Electric Motors	Sec:21:11
Bellhousing Gaskets	Sec:21:13
Couplings	Sec:21:13
Spiders - Rubber Insert	Sec:21:14
Pump Port Adaptors	Sec:21:14
Pump Port Adaptors Dimensions (3 Holes)	Sec:21:15
Pump Port Adaptors Dimensions (4 Holes)	Sec:21:15
Electric Motor - Technical Info	Sec21:16

## Gear Pumps

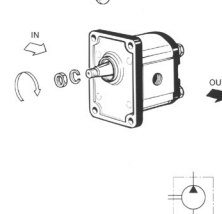
### Group 1 pump – taper shaft 1:8 threaded body

	Part number	Displacement	Inlet/Outlet Port - BSP	Retail price R
	1PF 1.1 L46Z02S	1.1cc	3/8-3/8	
	1PF 1.3 L46Z02S	1.3cc	3/8-3/8	
	1PF 2.1 L46Z02S	2.1cc	3/8-3/8	
	1PF 2.7 L46Z02S	2.7cc	3/8-3/8	
	1PF 3.2 L46Z02S	3.2cc	3/8-3/8	
	1PF 3.7 L46Z02S	3.7cc	3/8-3/8	
	1PF 4.2 L46Z02S	4.2cc	3/8-3/8	
	1PF 4.8 L46Z02S	4.8cc	3/8-3/8	
	1PF 5.8 L46Z02S	5.8cc	3/8-3/8	
	1PF 8.0 L46Z02S	8cc	3/8-3/8	

### Group 2 pump – taper shaft 1:8 threaded body

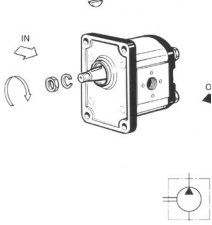
	Part number	Displacement	Inlet/Outlet Port - BSP	Retail price R
	2APF4L04Z03S	4cc	1/2 - 1/2	
	2APF6L04Z03S	6cc	1/2 - 1/2	
	2APF8L04Z03S	8cc	1/2 - 1/2	
	2APF10L04Z03S	10cc	1/2 - 1/2	
	2APF12L04Z03S	12cc	1/2 - 1/2	
	2APF14L08Z03S	14cc	3/4 - 1/2	
	2APF16L08Z03S	16cc	3/4 - 1/2	
	2APF18L08Z03S	18cc	3/4 - 1/2	
	2APF20L08Z03S	20cc	3/4 - 1/2	
	2APF23L08Z03S	23cc	3/4 - 1/2	
	2APF25L08Z03S	25cc	3/4 - 1/2	
	2APF28L08Z03S	28cc	3/4 - 1/2	
	2APF30L03Z03S	30cc	1 - 3/4	

### Group 3 pump – taper shaft 1:8 threaded body

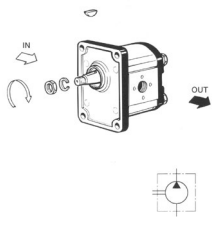
	Part number	Displacement	Inlet/Outlet Port-BSP	Retail price R
	3APF22L03Z05S	22cc	1 - 3/4	
	3APF26L03Z05S	26cc	1 - 3/4	
	3APF34L03Z05S	34cc	1 - 3/4	
	3APF39L03Z05S	39cc	1 - 3/4	
	3APF43L03Z05S	43cc	1 - 3/4	
	3APF51L03Z05S	51cc	1 - 3/4	
	3APF60L03Z05S	60cc	1 - 3/4	
	3APF70L11Z05S	70cc	1 1/4-1	
	3APF78L11Z05S	78cc	1 1/4-1	
	3APF89L11Z05S	89cc	1 1/4-1	

# Gear Pumps

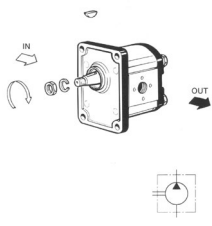
## Group 1 pump – taper shaft 1:8 flange ports

	Part number	Displacement	Inlet			Outlet			Retail price R
			ØD1	Ød1	T1	ØD1	Ød1	T2	
	1PF 1.1 F02Z02S	1.1cc	Ø30	Ø13	M6	Ø30	Ø13	M6	
	1PF 1.3 F02Z02S	1.3cc							
	1PF 2.1 F02Z02S	2.1cc							
	1PF 2.7 F02Z02S	2.7cc							
	1PF 3.2 F02Z02S	3.2cc							
	1PF 3.7 F02Z02S	3.7cc							
	1PF 4.2 F02Z02S	4.2cc							
	1PF 4.8 F02Z02S	4.8cc							
	1PF 5.8 F02Z02S	5.8cc							
	1PF 8.0 F02Z02S	8.0cc							

## Group 2 pump – taper shaft 1:8 flange ports

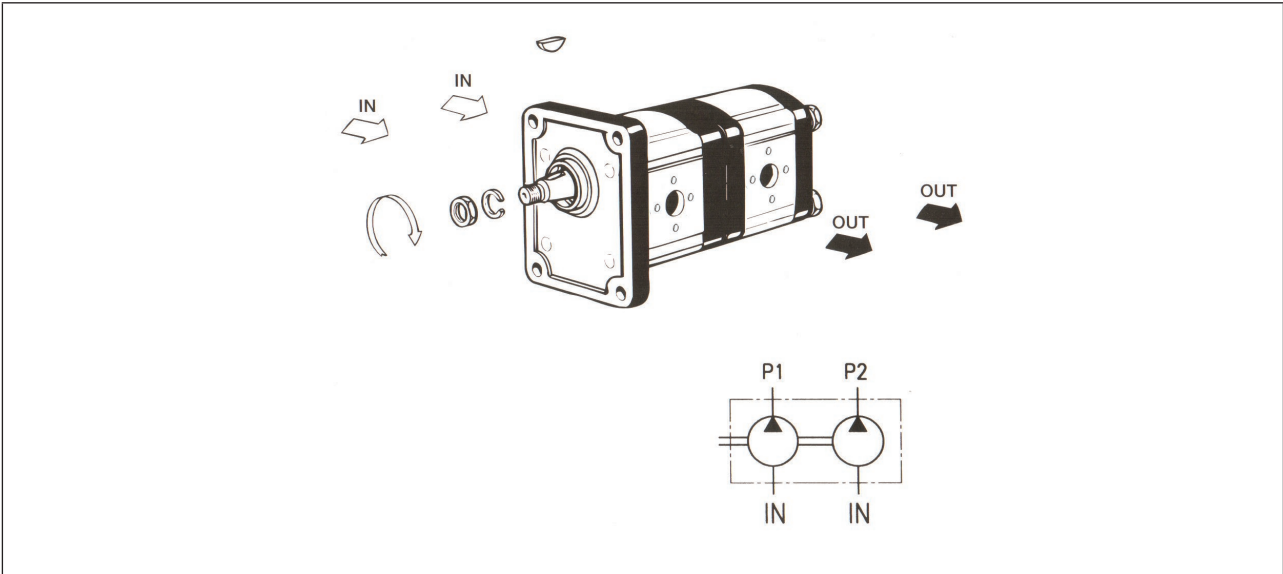
	Part number	Displacement	Inlet			Outlet			Retail price R
			ØD1	Ød1	T1	ØD1	Ød1	T2	
	2APF4F02Z03S	4cc	Ø30	Ø13	M6	Ø30	Ø13	M6	
	2APF6F02Z03S	6cc							
	2APF8F02Z03S	8cc	Ø40	Ø20	M8				
	2APF10F06Z03S	10cc							
	2APF12F06Z03S	12cc							
	2APF14F06Z03S	14cc							
	2APF16F06Z03S	16cc							
	2APF18F06Z03S	18cc							
	2APF20F06Z03S	20cc							
	2APF23F06Z03S	23cc							
	2APF25F06Z03S	25cc							
	2APF28F06Z03S	28cc							
	2APF30F06Z03S	30cc							

## Group 3 pump – taper shaft 1:8 threaded body

	Part number	Displacement	Inlet			Outlet			Retail price R
			ØD1	Ød1	T1	ØD1	Ød1	T2	
	3APF22F06Z05S	22cc	Ø40	Ø20	M8	Ø30	Ø13	M6	
	3APF26F06Z05S	26cc							
	3APF34F06Z05S	34cc							
	3APF39F07Z05S	39cc	Ø50	Ø20	M8				
	3APF43F07Z05S	43cc							
	3APF51F07Z05S	51cc							
	3APF60F07Z05S	60cc							

# Gear Pumps

## Group 2 pump taper shaft 1:8 flange ports



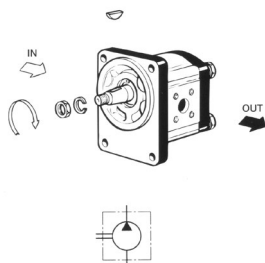
Part number	Displacement	Inlet			Outlet			Retail price R
		ØD1	Ød1	T1	ØD1	Ød1	T2	
2APDF0604DF02Z03	6cc + 4cc	Ø30	Ø13	M6	Ø30	Ø13	M6	
2APDF0606DF02Z03	6cc + 6cc							
2APDF0804DF02Z03	8cc + 4cc							
2APDF0806DF02Z03	8cc + 6cc							
2APDF0808DF02Z03	8cc + 8cc							
2APDF1204DF02Z03	12cc + 4cc							
2APDF1206DF02Z03	12cc + 6cc							
2APDF1208DF02Z03	12cc + 8cc							
2APDF1210DF02Z03	12cc + 10cc							
2APDF1212DF02Z03	12cc + 12cc							
2APDF1604DF02Z03	16cc + 4cc							
2APDF1606DF02Z03	16cc + 6cc							
2APDF1608DF02Z03	16cc + 8cc							
2APDF1610DF02Z03	16cc + 10cc							
2APDF1612DF02Z03	16cc + 12cc							
2APDF1614DF02Z03	16cc + 14cc							
2APDF1616DF02Z03	16cc + 16cc							
2APDF1804DF02Z03	18cc + 4cc							
2APDF1806DF02Z03	18cc + 6cc							
2APDF1808DF02Z03	18cc + 8cc							
2APDF1810DF02Z03	18cc + 10cc							
2APDF1814DF02Z03	18cc + 14cc							
2APDF1816DF02Z03	18cc + 16cc							
2APDF2004DF02Z03	20cc + 4cc							

## Gear Pumps

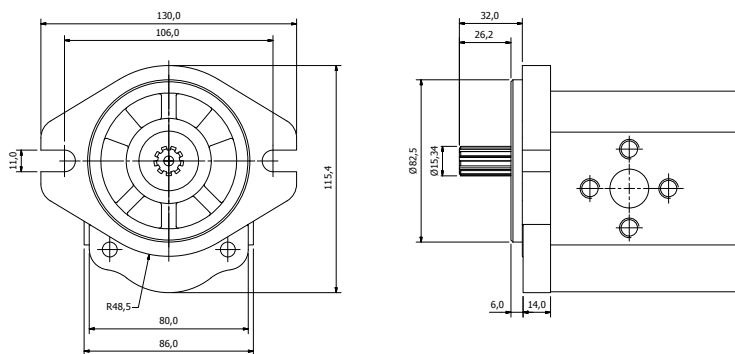
Part number	Displacement	Inlet			Outlet			Retail price R
		ØD1	Ød1	T1	ØD1	Ød1	T2	
2APDF2008DF02Z03	20cc + 8cc	Ø30	Ø13	M6	Ø30	Ø13	M6	
2APDF2010DF02Z03	20cc + 10cc							
2APDF2012DF02Z03	20cc + 12cc							
2APDF2014DF02Z03	20cc + 14cc							
2APDF2016DF02Z03	20cc + 16cc							
2APDF2018DF02Z03	20cc + 18cc							
2APDF2304DF02Z03	23cc + 4cc							
2APDF2306DF02Z03	23cc + 6cc							
2APDF2308DF02Z03	23cc + 8cc							
2APDF2310DF02Z03	23cc + 10cc							
2APDF2312DF02Z03	23cc + 12cc							
2APDF2314DF02Z03	23cc + 14cc							
2APDF2316DF02Z03	23cc + 16cc							
2APDF2318DF02Z03	23cc + 18cc							
2APDF2320DF02Z03	23cc + 20cc							
2APDF2323DF02Z03	23cc + 23cc							
2APDF2504DF02Z03	25cc + 4cc							
2APDF2506DF02Z03	25cc + 6cc							
2APDF2508DF02Z03	25cc + 8cc							
2APDF2510DF02Z03	25cc + 10cc							
2APDF2512DF02Z03	25cc + 12cc							
2APDF2514DF02Z03	25cc + 14cc							
2APDF2516DF02Z03	25cc + 16cc							
2APDF2518DF02Z03	25cc + 18cc							
2APDF2520DF02Z03	25cc + 20cc							
2APDF2523DF02Z03	25cc + 23cc							

We also do a range of triple combination group 2 pumps as well

Group 2 pump – 80mm spigot – taper shaft 1:5

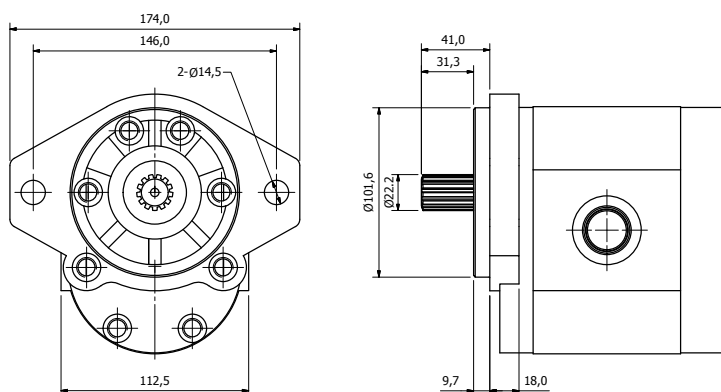
80mm spigot - taper shaft 1:5	Part number	Displacement	D1	d1	T1	D2	d2	T2	Retail price R
	2APF04F52Z18	4	40	20	M6	35	15	M6	
	2APF06F52Z18	6							
	2APF08F52Z18	8							
	2APF10F52Z18	10							
	2APF12F52Z18	12							
	2APF14F52Z18	14							
	2APF16F52Z18	16							
	2APF18F52Z18	18							
	2APF20F52Z18	20							
	2APF23F52Z18	23							
	2APF25F52Z18	25							

## SAE "A" 2 Bolt Mounting Pumps



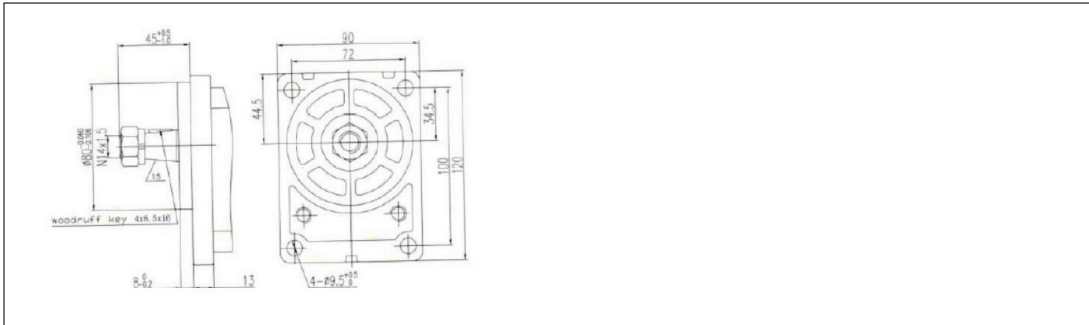
Model	Displacement (ML/R)	Pressure		Speed			Shaft Splined	PCD		Retail price R
		Rated	Peak	Rated	Max	Min		In	Out	
2APG16LJ395B03LS	16	200 (250)	250 (300)	2000	3500	500	15.34mm - 9 splined	40	30	
2APG18F06SB03LS	18	200 (250)	250 (300)	2000	3500	500	15.34mm - 9 splined	40	30	
2APG25F06SB03LS	25	200 (250)	250 (300)	2000	3500	500	15.34mm - 9 splined	40	30	

## SAE "B" 2 Bolt Mounting Pumps



Model	Displacement (ML/R)	Pressure		Speed			Shaft Splined	PCD		Retail price R
		Rated	Peak	Rated	Max	Min		In	Out	
3APG34L42S05R	34	200 (250)	250 (300)	2000	3000	400	22mm - 13	15/16 SAE (16)	1 1/16 SAE (12)	
3APG51L42S05R	51	200 (250)	250 (300)	2000	2400	400	22mm - 13	15/16 SAE (16)	1 1/16 SAE (12)	

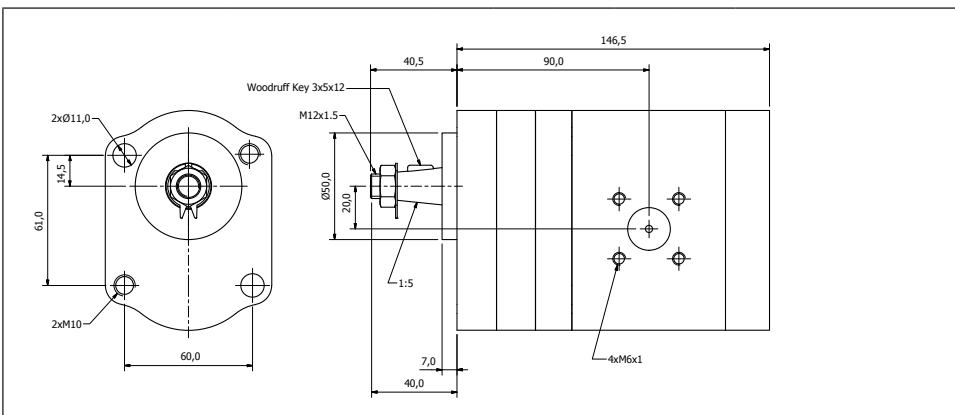
## Deutz Pump with Outboard Bearing



Model	Displacement (ML/R)	Pressure		Speed			In	Out	Retail price R
		Rated	Peak	Rated	Max	Min			
2PF18F52Z18*-0	18	200(250)	250(300)	200	3500	500	35	40	

## Deutz Gear Pump

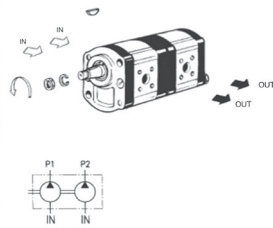
single gear pumps for deutz 1:5 Taper



Part number	Displacement	D1	d1	T1	D2	d2	T2	Retail price R
2APF4F60Z11L	4	40	15	M6	35	15	M6	
2APF6F60Z11L	6	40	15	M6	35	15	M6	
2APF8F52Z11L	8	40	20	M6	35	15	M6	
2APF10F52Z11L	10							
2APF12F52Z11L	12							
2APF14F52Z11L	14							
2APF16F52Z11L	16							
2APF18F52Z11L	18							
2APF20F52Z11L	20							
2APF23F52Z11L	23							
2APF25F52Z11L	25							
2APF28F52Z11L	28							
2APF30F52Z11L	30							

## Gear Pump Deutz

### double gear pumps for deutz 1:5 taper



Part number	Displacement	Inlet(Front Pump)			Inlet (Rear Pump)			Outlet (Front pump)			Retail price R
		D1	d1	T1	D1	d1	T1	D2	d2	T2	
2APDF1006DF52Z11L	10cc + 6cc	40	20	M6	40	20	M6	35	15	M6	
2APDF1008DF52Z11L	10cc + 8cc										
2APDF1010DF52Z11L	10cc + 10cc										
2APDF1206DF52Z11L	12cc + 6cc										
2APDF1208DF52Z11L	12cc + 8cc										
2APDF1212DF52Z11L	12cc + 12cc										
2APDF1606DF52Z11L	16cc + 6cc										
2APDF1608DF52Z11L	16cc + 8cc										
2APDF1610DF52Z11L	16cc + 10cc										
2APDF1612DF52Z11L	16cc + 12cc										
2APDF1616DF52Z11L	16cc + 16cc										
2APDF1818DF52Z11L	18cc + 18cc										
2APDF2006DF52Z11L	20cc + 6cc										
2APDF2008DF52Z11L	20cc + 8cc										
2APDF2010DF52Z11L	20cc + 10cc										
2APDF2012DF52Z11L	20cc + 12cc										
2APDF2016DF52Z11L	20cc + 16cc										
2APDF2020DF52Z11L	20cc + 20cc										

## Gear Motors

### Group 2 gear motor - taper shaft 1:8 threaded body

	Part number	Displacement	Inlet/Outlet Port Size BSP	Retail price R
	2AMF04L04Z03S	4cc	1/2-1/2	
	2AMF06L04Z03S	6cc	1/2-1/2	
	2AMF08L04Z03S	8cc	1/2-1/2	
	2AMF10L04Z03S	10cc	1/2-1/2	
	2AMF12L04Z03S	12cc	1/2-1/2	
	2AMF14L04Z03S	14cc	1/2-1/2	
	2AMF16L08Z03S	16cc	3/4-1/2	
	2AMF18L08Z03S	18cc	3/4-1/2	
	2AMF20L08Z03S	20cc	3/4-1/2	
	2AMF23L08Z03S	23cc	3/4-1/2	
	2AMF25L08Z03S	25cc	3/4-1/2	



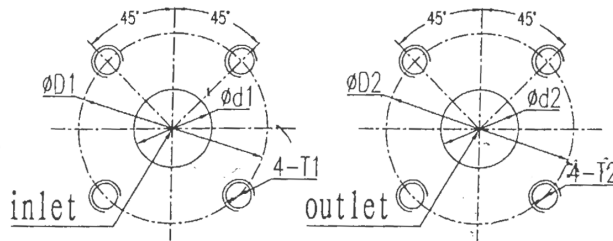
# Inlet / Outlet Combination

## thread combination

Inlet/ Outlet Port	Inlet	Outlet
Code	T1	T2
L00	G1	G1
L02	G1	G1/2
L03	G1	G3/4
L04	G1/2	G1/2
L05	G1/2	G3/8
L06	G1/4	G1/4
L08	G3/4	G1/2
L09	NPT 1/2	NPT 1/2
L10	NPT 3/4	NPT 1/2

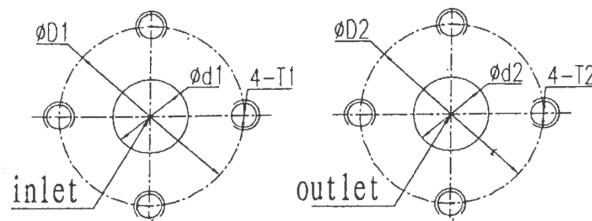
Inlet/ Outlet Port	Inlet	Outlet
Code	T1	T2
L11	G1-1/4	G1
L44	G3/8	G1/4
L46	G3/8	G3/8
L60	G 1 1/2	G 1 1/4
L65	G 1 1/2	G 1
L75	G1	G 1/2
L96	NPT 3/4	NPT 3/4
L99	G 1 1/4	G 1 1/4
L106	1 7/8-12UNF-2B	1-5/16-12UNF-2B

## flange combinations F01



Inlet/Outlet Flange Code	Inlet			Outlet		
	ØD1	Ød1	T1	ØD2	Ød2	T2
F01	Ø30	Ø12	m6	Ø30	Ø12	M6

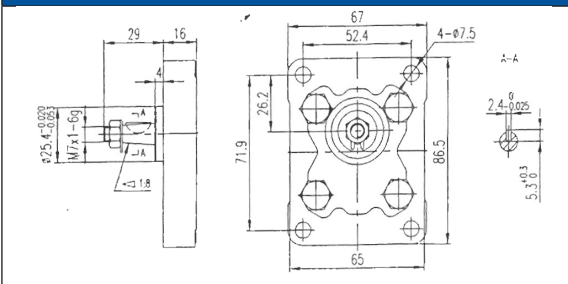
## flange combinations



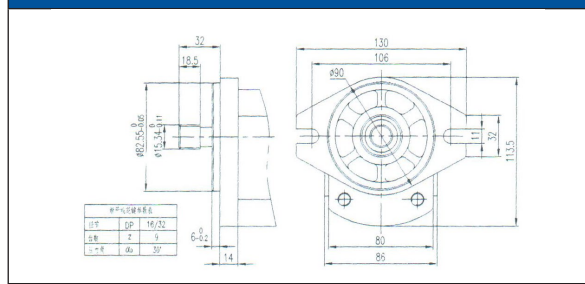
Inlet/Outlet Flange Code	Inlet			Outlet		
	ØD1	Ød1	T1	ØD2	Ød2	T2
F02	Ø30	Ø13	4-M6	Ø30	Ø13	4-M6
F03	Ø38	Ø18	4-M8	Ø38	Ø15	4-M8
F04	Ø40	Ø20	4-M6	Ø35	Ø15	4-M6
F05	Ø40	Ø20	4-M6	Ø35	Ø15	4-M6
F06	Ø40	Ø20	4-M8	Ø30	Ø13	4-M6
F07	Ø50	Ø20	4-M8	Ø50	Ø20	4-M8
F08	Ø50	Ø22	4-M8	Ø50	Ø18	4-M8
F52	Ø40	Ø20	4-M6	Ø35	Ø15	4-M6
F60	Ø40	Ø15	4-M6	Ø35	Ø15	4-M6

# Dimensions

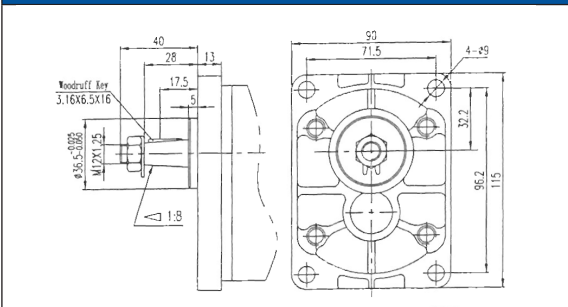
## Z02 Group 1



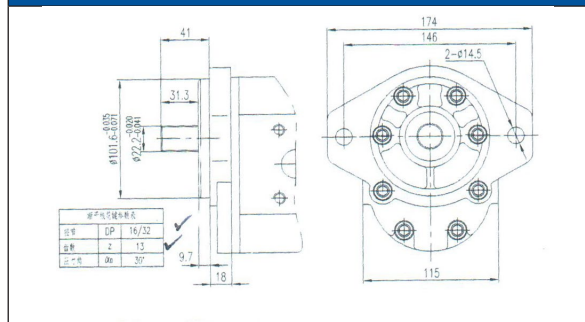
## S03



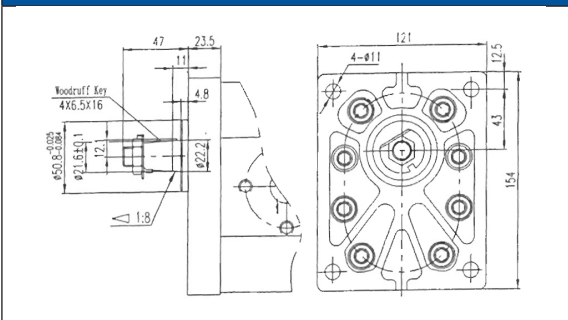
## Z03 Group 2



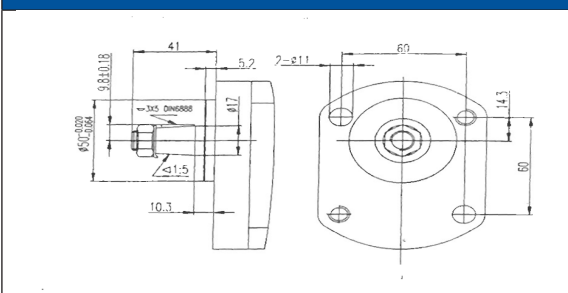
## S05



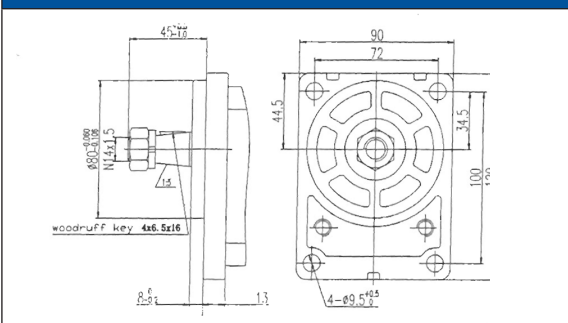
## Z05 Group 3



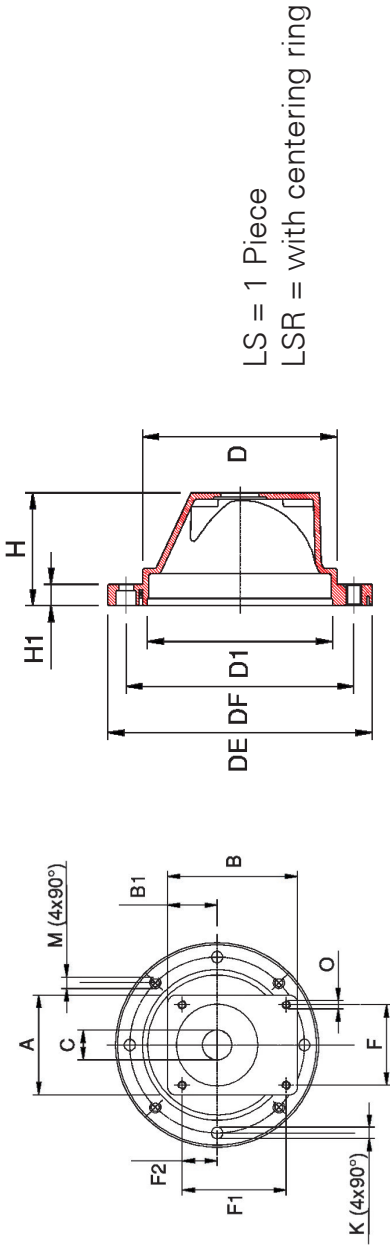
## Z11 Deutz



## Z18 80mm Spigot



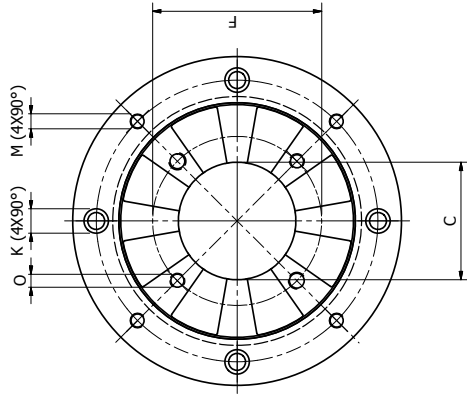
# Bellhousing for Electric Motors – Gear Pumps



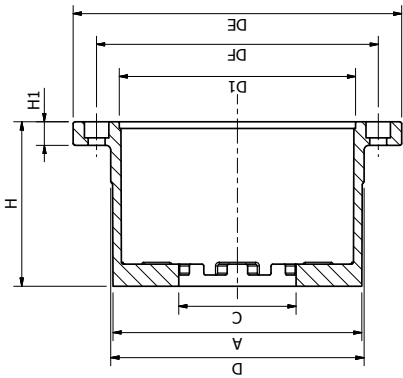
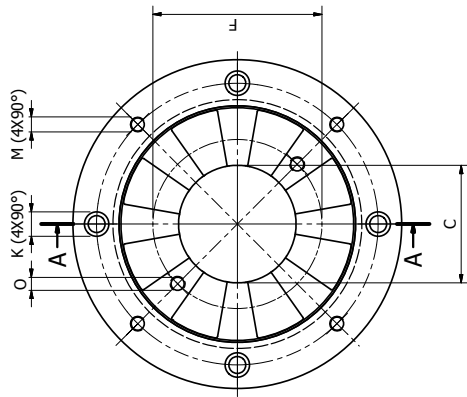
Part Number	Motor Frame size	KW	Pump Group Size	A	B	B1	D	DI	DF	DE	H	H1	M		C	F	F1	F2	O	Retail price R	
													K	8F							
BEHLS141	D63	0.12-0.18	1	72	89	34.2	97	95	115	140	60	12	Ø10	M8	Ø10	25.4	52	72	26.2	M6	
BEHLS161	D71	0.25-0.37	1	72	89	34.5	110	110	130	160	70	14	Ø10	M8	Ø10	25.4	52	72	26.2	M6	
BEHLS201	D80	0.55-1.5	1	90	120	45	135	130	165	200	95	15.5	Ø11.5	M10	Ø11.5	25.4	52	72	26.2	M6	
BEHLS251	D100	2.2-2.4	1	92	121	46.5	184	180	215	250	106	20	Ø14.0	M12	Ø14.0	25.4	52	72	26.2	M6	
BEHLS202	D80/90	0.55-1.5	2	90	120	45	135	130	165	200	95	15.5	Ø11.5	M10	Ø11.5	36.5	71.5	96	32.5	M8	
BEHLS252	D100/112	2.2-4	2	92	121	46.5	184	180	215	250	106	20	Ø14.0	M12	Ø14.0	36.5	71.5	96	32.5	M8	
BEHLS302	D132	5.5-7.5	2	120	153	55	234	230	265	300	130	21	Ø14.0	M12	Ø14.0	36.5	71.5	96	32.5	M8	
BEHLS352	D160/180	11-22	2	122	168	61	260	250	300	350	181	25	Ø18	M16	Ø18	36.5	71.5	96	32.5	M8	
BEHLS303	D132	5.5-7.5	3	120	153	55	234	230	265	300	130	21	Ø14	M16	Ø14	36.5	71.5	96	32.5	M8	
BEHLS353	D160/180	11-22	3	122	168	61	260	250	300	350	181	25	Ø18	M16	Ø18	50.8	98.5	128	42	M10	
BEHLSR201	D80/90	0.55-1.5	1	90	120	45	135	130	165	200	95	15.5	Ø11.5	M10	Ø11.5	25.4	52	72	26.2	M6	
BEHLSR252	D100/112	2.2-4	2	92	121	46.5	184	180	215	250	106	20	Ø14.5	M12	Ø14.0	36.5	71.5	96	32.5	M8	
BEHLSR302	D132	5.5-7.5	2	120	153	55	234	230	265	300	130	21	Ø14.0	M12	Ø14.0	36.5	71.5	96	32.5	M8	

# Bellhousing for Electric Motors – Vane/Piston Pumps

Bell Housing With 4 Pump Mounting Holes

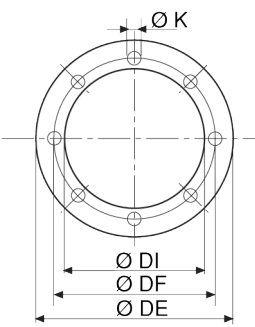


Bell Housing With 2 Pump Mounting Holes

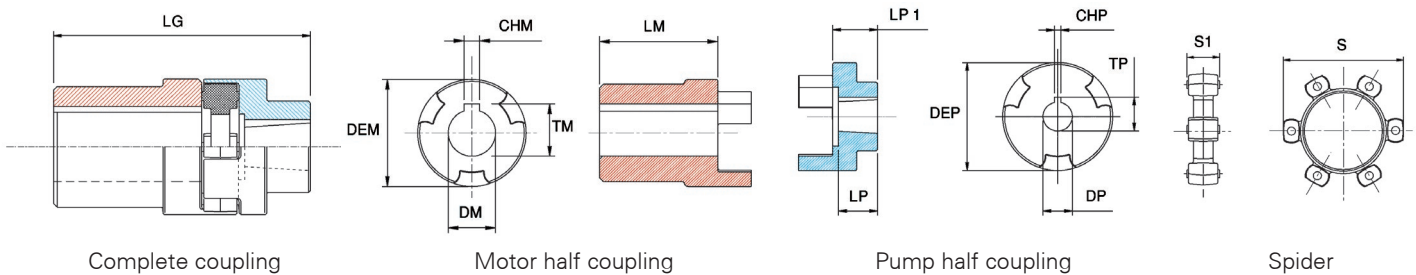


Part Number	Motor Frame Size	kw	Pump Group Size	A	D	D1	DF	DE	H	H1	K	M	C	F	O	Number of Hole	Retail Price
BEHLSMA30825A	D132	5.5-7.5	PPC	224	234	230	265	300	170	21	14	M12	82.5	106	M10	2	
BEHLSMA30100E	D132	5.5-7.5	PPC VANE	224	234	230	265	300	170	21	14	M12	100	140	M12	2	
BEHLSMA30101E	D132	5.5-7.5	PPC VANE	224	234	230	265	300	170	21	14	M12	101.6	146	M14	2	
BEHLSMA30125H	D132	5.5-7.5	PPC	224	234	230	265	300	170	21	14	M12	125	170	Ø18	4	
BEHLSMA30127A	D132	5.5-7.5	PPC VANE	224	234	230	265	300	170	21	14	M12	127	181	M16	2	
BEHLSMA35101E	D160 180	11-22	PPC VANE	249	260	250	300	350	175	25	18	M16	101.6	146	M14	2	
BEHLSMB35125C	D160 180	11-22	PPC	249	260	250	300	350	175	25	18	M16	125	180	M16	2	
BEHLSMB35127A	D160 180	11-22	PPC VANE	249	260	250	300	350	175	25	18	M16	127	181	M16	2	
BEHLSMB35125H	D160 180	11-22	PPC	249	260	250	300	350	175	25	18	M16	125	170	Ø18	4	

## Bellhousing Gaskets

BELLHOUSING GASKETS	Dimensions					Retail price R
	Part number	ØDE	ØDF	ØDI	ØK	
	BHG140	140	115	101	10	
	BHG160	160	130	114	10	
	BHG200	200	165	141	13	
	BHG250	250	215	188	15	
	BHG300	300	265	238	15	
	BHG350	350	300	264	18	

## Couplings



Complete coupling

Motor half coupling

Pump half coupling

Spider

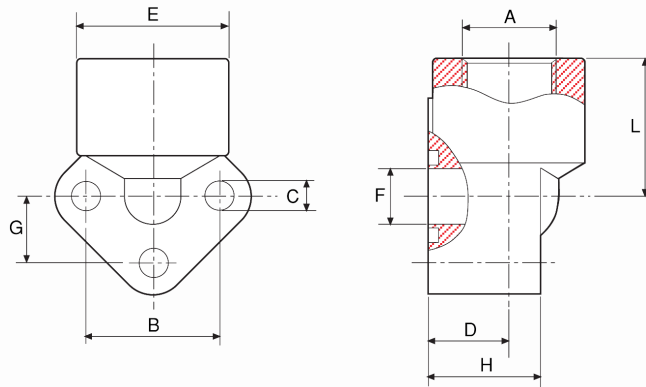
Part number	MOTOR (DM) Shaft Size	Kw	Pump Group	Pump Shaft	LG	LM	CHM	DEM	TM	LP1	LP	CHP	DEP	TP	DP	S	S1	Retail price R
COUGE111	11	0.12-0.18	1	1:8	55.3	23	4	45	12.8	15.3	15.3	2.4	45	10.5	9.7	45	16	
COUGE141	14	0.25-0.37	1	1:8	64.3	30	5	45	16.3	18.3	15.3	2.4	45	10.5	9.7	45	16	
COUGE191	19	0.55-0.75	1	1:8	89.3	50	6	45	21.8	23.3	14.8	1.4	45	10.5	9.7	45	16	
COUGE241	24	1.1-1.5	1	1:8	89.3	50	8	45	27	23.3	14.8	2.4	45	10.5	9.7	45	16	
COUGE281	28	2.2-4	1	1:8	99.5	60	8	55	31.3	21.5	14.5	2.4	55	10.5	9.7	55	18	
COUGE192	19	0.55-0.75	2	1:8	88.5	50	6	45	21.8	22.5	22.5	3.2/4	45	18.5	17.36	45	16	
COUGE242	24	1.1-1.5	2	1:8	88.5	50	8	45	27	22.5	22.5	3.2/4	45	18.5	17.36	45	16	
COUGE282	28	2.2-4	2	1:8	99.5	60	8	55	31.3	21.5	21.5	3.2/4	55	18.5	17.36	55	18	
COUGE382	38	5.5-7.5	2	1:8	122.0	80	10	74	41.3	22	21.5	3.2/4	74	18.5	17.36	74	20	
COUGE383	38	5.5-7.5	3	1:8	122.0	80	10	74	41.3	27.5	22.5	4	74	23.6	22.22	74	20	
COUGE422	42	11-15	2	1:8	174.50	110	12	104	45.3	39.5	22	3.2/4	104	18.5	17.36	104	24	
COUGE423	42	11-15	3	1:8	174.50	110	12	104	45.3	40.5	29	4	104	23.6	22.22	104	24	
COUGE483	48	18.5-22	3	1:8	174.50	110	14	104	45.3	40.5	29	4	104	23.6	22.22	104	20	
COUGE282MP	28	2.2-4	2	1:5	97.5	60	8	55	31.3	19.5	7	3	55	18.2	16.90	55	18	
COUGE38x7/8x3/16	38	5.5-7.5	Vane	22:2	122.0	80	10	74	41	22	25	4.76	74	24.8	22.22	74	20	
COUGE38x7/8x1/4	38	5.5-7.5	Vane	22:2	122.0	80	10	74	41	22	25	6.35	74	25	22.22	74	20	
COUGE38x25x8	38	5.5-7.5	PPC	25	122.0	80	10	74	41	27.5	25	8	74	28.3	25	74	20	
COUGE42x7/8x3/16	42	11-15	Vane	22:2	174.0	110	12	104	45	40.5	29	4.76	104	24.8	22.22	104	24	
COUGE42x7/8x1/4	42	11-15	Vane	22:2	174.0	110	12	104	45	40.5	29	6.35	104	25	22.22	104	24	
COUGE42x25x8	42	11-15	PPC	25	174.0	110	12	104	45	40.5	29	8	104	283	25	104	24	
COUGE42x32x10	42	11-15	PPC	32	174.0	110	12	104	45	40.5	29	10	104	353	32	104	24	
COUGE48x7/8x3/16	48	18.5-22	Vane	22:2	174.0	110	14	104	45	40.5	29	4.76	104	248	22.22	104	24	
COUGE48x7/8x1/4	48	18.5-22	Vane	22:2	174.0	110	14	104	45	40.5	29	6.35	104	25	22.22	104	24	
COUGE48x25x8	48	18.5-22	PPC	25	174.0	110	14	104	45	40.5	29	8	104	283	25	104	24	
COUGE48x32x10	48	18.5-22	PPC	32	174.0	110	14	104	45	40.5	29	10	104	435.3	32	104	24	

## Spiders – Rubber Insert

Part number	Coupling size	Retail price R
COU-RI-S04	11-24mm	
COU-RI-S05	19-28mm	
COU-RI-S07	38mm	
COU-RI-S10	42-60mm	

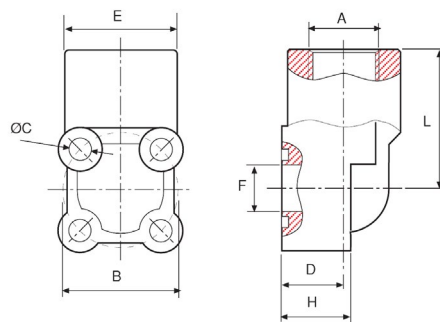
## Pump Port Adaptors

### Aluminium 90° pump connector 3 holes



Part number	Description	Retail price R
PPA-D38M30PCD	port adaptor diamond shape 3/8 BSP 30 PCD	
PPA-D12M30PCD	port adaptor diamond shape 1/2 BSP 30 PCD	
PPA-D12M40PCD	port adaptor diamond shape 1/2 BSP 40 PCD	
PPA-D34M40PCD	port adaptor diamond shape 3/4 BSP 40 PCD	
PPA-D34M5156PCD	port adaptor diamond shape 3/4 BSP 51-56 PCD	
PPA-D100M5156PCD	port adaptor diamond shape 1 BSP 51-56 PCD	

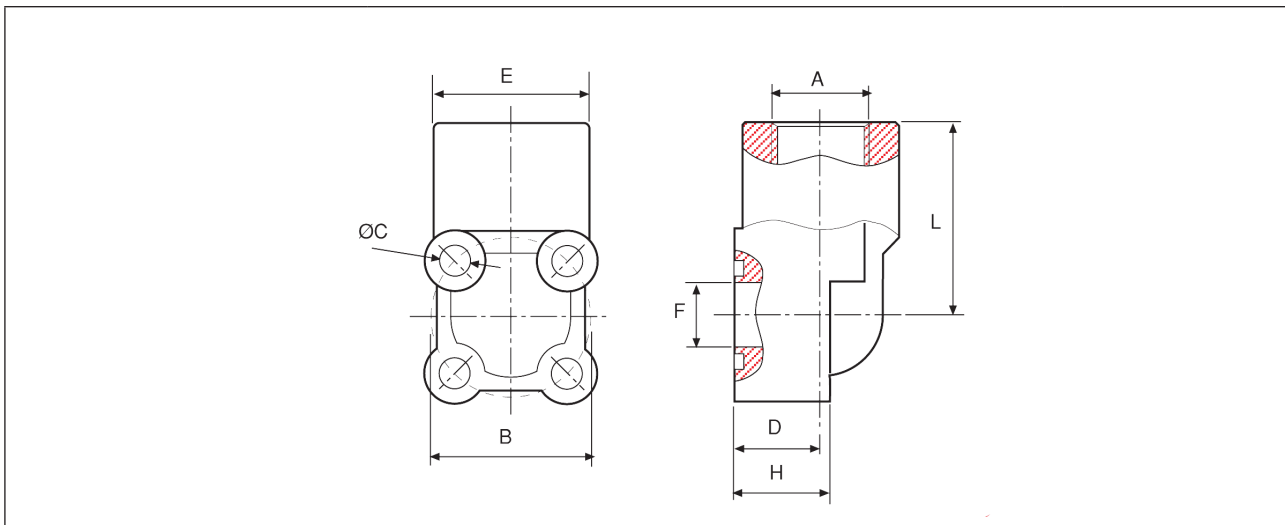
### Aluminium 90° pump connector 4 holes



Part number	Description	Retail price
PPA-SQ38M30PCD	port adaptor square 3/8 BSP 30 PCD	
PPA-SQ12M30PCD	port adaptor square 1/2 BSP 30 PCD	
PPA-SQ12M40PCD	port adaptor square 1/2 BSP 40 PCD	
PPA-SQ34M40PCD	port adaptor square 3/4 BSP 40 PCD	

## Pump Port Adaptors

### Aluminium 90° pump connector 4 holes



Part number	Description	Retail price
PPA DEU SQ 38M35 PCD	port adaptor deutz square 3/8 BSP 35 PCD	
PPA DEU SQ 12M35 PCD	port adaptor deutz square 1/2 BSP 35 PCD	

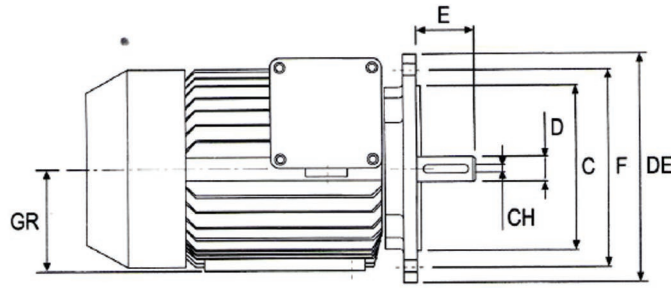
## Pump Port Adaptors Dimensions (3 Holes)

Group	Dimensions										
	A	B	C	D	E	F	G	H	L	Bolt size	O-ring
0.5	3/8"	26	5.5	18	31	10	13	25	31	M 5 X 35	2056
	1/2"										
1	3/8"	30	6.5	18	34	12.5	15	26	31	M 6 X 35	121
	1/2"										
2	1/2"	40	8.5	21.5	42	18	20	31	40	M8 X 45	130
	3/4"										
3	3/4"	51-56	11	26	49	24.5	25,5-28	42	46	M10 X 60	4118
	1"										

## Pump Port Adaptors Dimensions (4 Holes)

Size	Dimensions										
	A	B	C	D	E	F	H	L	Bolt size		O-ring
30	3/8"	30	6.5	18	33	11.5	20	39	M 6 X 30	M 6 X 40	121
	1/2"										
35	3/8"	35	6.5	18	34	14	20	42.5	M 6 X 30	M 6 X 40	3075
	1/2"										
40	1/2"	40	6.5	24	41	18	28	47.5	M 6 X 40	M 6 X 50	130
	3/4"										
55	3/4"	55	8.5	29	49	24.5	31	54	M 8 X 45	M 8 X 60	4118
	1"										

# Electric Motor – Technical Info



Size	2 Pole 3000 rpm			4 Pole 1500 rpm			6 Pole 1500 rpm			8 Pole 1500 rpm			Dimensions					
	kW	T(Nm)	HP	kW	T(Nm)	HP	kW	T(Nm)	HP	kW	T(Nm)	HP	D	E	CH	C	F	DE
63	0.18 ÷ 0.25	0.62 ÷ 0.86	0.24 ÷ 0.34	0.12 ÷ 0.18	0.88 ÷ 1.3	0.16 ÷ 0.25	0.06 ÷ 0.09	0.72 ÷ 1.1	0.008 ÷ 0.12	-	-	-	11	23	4	95	115	140
71	0.37 ÷ 0.55	1.3 ÷ 1.9	0.5 ÷ 0.75	0.25 ÷ 0.37	1.8 ÷ 2.5	0.35 ÷ 0.5	0.18 ÷ 0.25	2 ÷ 2.7	0.24 ÷ 0.34	0.09 ÷ 0.12	1.4 ÷ 1.8	0.12 ÷ 0.16	14	30	5	110	130	160
80	0.75 ÷ 1.1	2.5 ÷ 3.7	1 ÷ 1.5	0.55 ÷ 0.75	3.7 ÷ 5.1	0.75 ÷ 1	0.37 ÷ 0.55	3.9 ÷ 5.8	0.5 ÷ 0.75	0.18 ÷ 0.25	2.5 ÷ 3.5	0.25 ÷ 0.35	19	40	6	130	165	200
90	1.5 ÷ 2.2	5 ÷ 7.4	2 ÷ 3	1.1 ÷ 1.5	7.5 ÷ 10	1.5 ÷ 2	0.75 ÷ 1.1	8 ÷ 12	1 ÷ 1.5	0.37 ÷ 0.55	5.3 ÷ 7.9	0.5 ÷ 0.75	24	50	8	130	165	200
100	3	9.8	4	2.2 ÷ 3	15 ÷ 20	3 ÷ 4	1.5	15	2	0.75 ÷ 1.1	11 ÷ 16	1 ÷ 1.5	28	60	8	180	215	250
112	4	13	5.5	4	27	5.5	2.2	22	3	1.5	21	2	28	60	8	180	215	250
132	5.5 ÷ 7.5	18 ÷ 25	7.5 ÷ 10	5.5 ÷ 7.5	36 ÷ 49	7.5 ÷ 10	3 ÷ 5.5	30 ÷ 5.5	4 ÷ 7.5	2.2 ÷ 3	29 ÷ 40	3 ÷ 4	38	80	10	230	265	300
160	11 ÷ 18.5	36 ÷ 60	15 ÷ 25	11 ÷ 15	72 ÷ 98	15 ÷ 20	7.5 ÷ 11	74 ÷ 108	10 ÷ 15	4 ÷ 7.5	54 ÷ 100	5.5 ÷ 10	42	110	12	250	300	350
180	22	71	30	18.5 ÷ 22	121 ÷ 144	25 ÷ 30	15	148	20	11	145	15	48	110	14	250	300	350
200	30 ÷ 37	97 ÷ 120	40 ÷ 50	30	196	40	18.5 ÷ 22	181 ÷ 215	25 ÷ 30	15	198	20	55	110	16	300	350	400
225	45	145	60										55	110	16	350	400	450
				37 ÷ 45	240 ÷ 292	50 ÷ 60	30	293	40	18.2 ÷ 22	244 ÷ 290	25 ÷ 30	60	140	18	350	400	450
250	55	177	75										65	140	18	450	500	550
				55	177	75	37	361	50	30	392	40	65	140	18	450	500	550
280	75 ÷ 90	241 ÷ 289	100 ÷ 125										65	140	18	450	500	550
				75 ÷ 90	484 ÷ 581	100 ÷ 125	45 ÷ 55	438 ÷ 535	60 ÷ 75	37 ÷ 45	483 ÷ 587	50 ÷ 60	75	140	20	450	500	550
315 S	110	353	150										65	140	18	550	600	660
				110	707	150	75 ÷ 90	727 ÷ 873	100 ÷ 122	55	712	75	80	170	22	550	600	660